

POWER TO LIFT

CRANE GUIDE



| Crane classification | RC/RCS | MC/MCS | Crane tm segment | |
|---------------------------------------|------------|-----------------------|------------------|----------|
| K - Knuckle boom cranes | 270K-RC | 270K-MC | 2-14 tm | |
| | 340K-RC | 340K-MC | | |
| | 610K-RC | 610K-MCS | | |
| | 710K-RCS | 810K-MCS | | |
| | 810K-RC | | | |
| | 910K-RCS | | | |
| | 1120K-RCS | | | |
| | 1130K-RCS | | | |
| | 1320K-RCS | | | |
| KS - Knuckle boom short crane | 1320KS-RCS | | | |
| Z-fold cranes | 1444Z-RC | | | |
| K - Knuckle boom cranes | 1610K-RCS | | 15-31 tm | |
| | 1620K-RCS | | | |
| | 1910K-RCS | | | |
| | 1920K-RCS | | | |
| | 2310K-RCS | | | |
| | 2320K-RCS | | | |
| | 2810K-RCS | | | |
| | 2820K-RCS | | | |
| K-HS - Knuckle boom high stand | | 1800K-HS10-MC | | |
| T - Telescopic cranes | 1630T-RCS | 1530T-MCS | | |
| | 2130T-RCS | 1910T-MC 2030T-MCS | | |
| Z-fold cranes | 1643Z-RC | 1643Z-MC | | |
| | 2243Z-RCS | 1943Z-MC | | |
| L - Long boom cranes | 1730L-RCS | 2110L-MC | | |
| | 2530L-RCS | | | |
| S - Retracted knuckle boom | 2310S-RCS | | | |
| K - Knuckle boom cranes | 3220K-RCS | | | 32-59 tm |
| | 4020K-RCS | | | |
| | 5020K-RCS | | | |
| | 7020K-RCS | | 60-95 tm | |
| | 9520K-RCS | | | |
| OK - Optimised knuckle boom | 7020OK-RCS | | | |
| | 9520OK-RCS | | | |

Content

| | |
|------------|----|
| 270K-MC | 8 |
| 270K-RC | 10 |
| 340K-MC | 12 |
| 340K-RC | 14 |
| 610K-MCS | 16 |
| 610K-RC | 18 |
| 710K-RCS | 20 |
| 810K-MCS | 22 |
| 810K-RC | 24 |
| 910K-RCS | 26 |
| 1120K-RCS | 28 |
| 1130K-RCS | 30 |
| 1320K-RCS | 32 |
| 1330K-RCS | 34 |
| 1610K-RCS | 36 |
| 1620K-RCS | 38 |
| 1910K-RCS | 40 |
| 1920K-RCS | 42 |
| 2310K-RCS | 44 |
| 2320K-RCS | 46 |
| 2810K-RCS | 48 |
| 2820K-RCS | 50 |
| 3220K-RCS | 52 |
| 4020K-RCS | 54 |
| 5020K-RCS | 56 |
| 7020K-RCS | 58 |
| 9520K-RCS | 60 |
| 7020OK-RCS | 62 |
| 9520OK-RCS | 64 |
| 1320KS-RCS | 66 |
| 1800K-HS10 | 68 |
| 1530T-MCS | 70 |
| 1630T-RCS | 72 |
| 1910T-MC | 74 |
| 2030T-MCS | 76 |
| 2130T-RCS | 78 |
| 1444Z-RC | 80 |

Content

| | |
|----------------|----|
| 1643Z-MC | 82 |
| 1643Z-RC | 84 |
| 1943Z-MC | 86 |
| 2243Z-RCS | 88 |
| 1730L-RCS | 90 |
| 2110L-MC | 92 |
| 2530L-RCS | 94 |
| 2310S-RCS | 96 |
| WB 41064-K-RCS | 98 |

Danish crane manufacturer

HMF has specialized in developing truck cranes that are strong, compact, and nice to work with since 1952. Together with skilled employees and dedicated partners we sell, service, and install Danish quality cranes in more than 40 countries.

Loader cranes for many purposes

Our cranes are used in the entire world by a wide range of companies like haulage contractors, builders' merchants, road and recovery services, and self-employed hauliers.



Compact and light

HMF truck cranes are characterized by their light tare weight and compact design.

This gives you extra space on the truck body as well as extra kgs for what you need to move.



Strong, sturdy, and durable

HMF truck cranes are designed to last for many years.

With high-tensile steel, dual-coating, and internal hose-routing our cranes are fit for all kinds of weather and terrain.

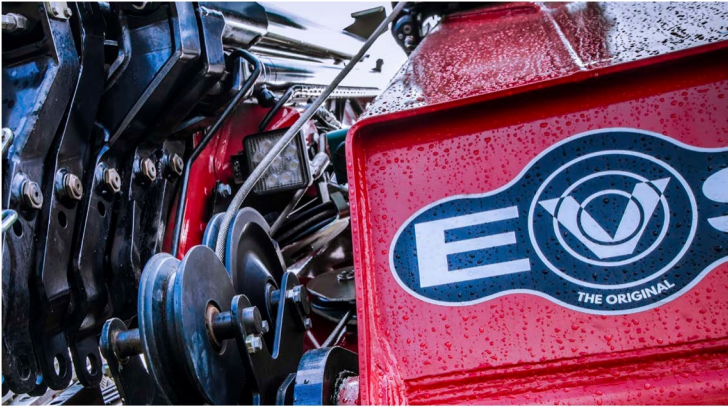


Smooth operation

HMF truck cranes are designed for a flexible and smooth operation.

This makes them suitable for different kinds of lifting tasks in all kinds of industries.





Dynamic and popular stability system

HMF cranes are widely known for their popular EVS stability system. EVS stands for electronic vehicle stability system.

EVS is an intelligent and sophisticated stability safety system which actively monitors vehicle stability.

It is easy to operate, so easy that most often you - as the crane operator - will not notice it is active, unless you are in a situation that might become critical.

Why choose EVS?

- Continuous monitoring of the vehicle stability
- Optimized lifting capacity in the entire working area – also in front of the vehicle
- Dynamic system that includes the current load on your vehicle in order to reach further

The system includes all these conditions when operating

- Load on the vehicle
- Load on the crane
- Speed
- Heel of the vehicle

Therefore, you will get a warning before a situation becomes critical. This means that you can trust the system to automatically limit inappropriate movements and to stop at the designated limit.



MC

Manually operated crane with full speed (Manual Control).

MCS

Manually operated crane with electro-hydraulic speed adaptation system (Manual Control Superior).

RC

Radio remote controlled crane (Remote Control).

RCS

Radio remote controlled crane with PVG 32 control valve and HD5 electronic speed adaptation system (Remote Control Superior).

Disclaimer

Even though we do our best, errors in content may occur. The contents of this material is for general information purpose. Cranes in the pictures may be featured with optional equipment, which do not correspond to the standard version. Please note, that weights may vary with a 5% deviation. As we update content continuously, please ensure you have the latest information. You can check this on hmfcranes.com.

270K-MC



Selected basics



MC



RCI



EQC

Selected options



WIDTH



LIGHT

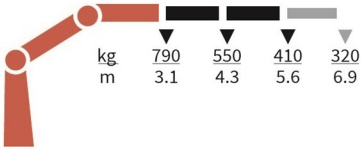


TANK

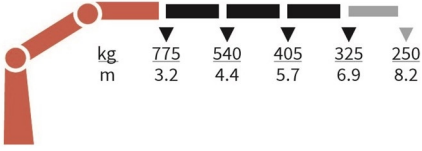
Specifications

| | Unit | 270-K2 | 270-K3 |
|--|-------|--------|--------|
| | tm | 2,5 | 2,4 |
| | m | 5,64 | 6,99 |
| | kgm | 390 | 390 |
| | ° | 370 | 370 |
| | mm | 1527 | 1527 |
| | mm | 1700 | 1700 |
| | mm | 538 | 564 |
| | mm | 3000 | 3000 |
| | mm | 3900 | 3900 |
| | Kg | 386 | 421 |
| | Kg | 59 | 59 |
| | bar | 240 | 240 |
| | l/min | 12 | 10 |
| | kW | 4 | 3,5 |

270-K2-MC



270-K3-MC



270K-RC



Selected basics



RCL



EQC



PVG 16

Selected options



WIDTH



LIGHT

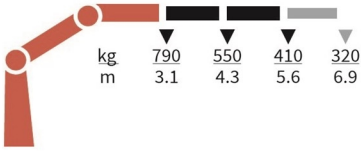


TANK

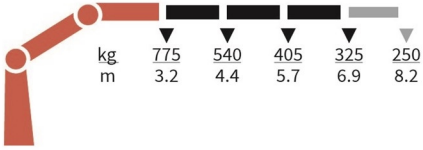
Specifications

| | Unit | 270-K2 | 270-K3 |
|--|-------|--------|--------|
| | tm | 2,5 | 2,4 |
| | m | 5,64 | 6,99 |
| | kgm | 390 | 390 |
| | ° | 370 | 370 |
| | mm | 1527 | 1527 |
| | mm | 1700 | 1700 |
| | mm | 538 | 564 |
| | mm | 3000 | 3000 |
| | mm | 3900 | 3900 |
| | Kg | 386 | 421 |
| | Kg | 59 | 59 |
| | bar | 240 | 240 |
| | l/min | 12 | 10 |
| | kW | 4 | 3,5 |

270-K2-RC



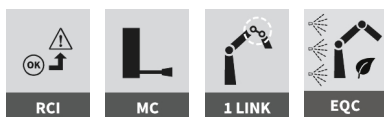
270-K3-RC



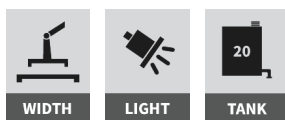
340K-MC



Selected basics



Selected options



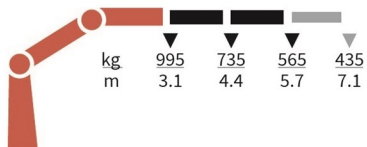
Specifications

| | Unit | 340-K1 | 340-K2 | 340-K3 |
|--|-------|--------|--------|--------|
| | tm | 3,2 | 3,2 | 3,2 |
| | m | 4,39 | 5,76 | 7,15 |
| | kgm | 550 | 600 | 600 |
| | ° | 370 | 370 | 370 |
| | mm | 1591 | 1591 | 1591 |
| | mm | 1700 | 1700 | 1700 |
| | mm | 516 | 516 | 516 |
| | mm | 3300 | 3300 | 3300 |
| | mm | 3900 | 3900 | 3900 |
| | Kg | 418 | 468 | 508 |
| | Kg | 72 | 72 | 72 |
| | bar | 220 | 240 | 240 |
| | l/min | 15 | 15 | 12 |
| | kW | 5,5 | 6,0 | 5,0 |

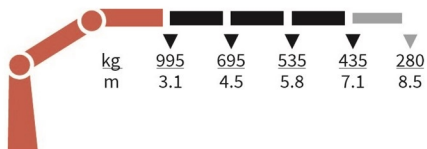
340-K1-MC



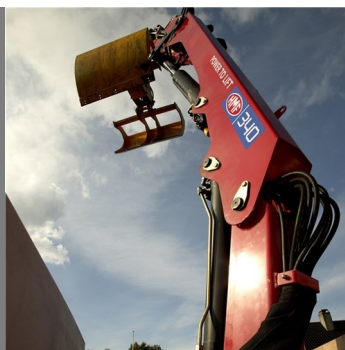
340-K2-MC



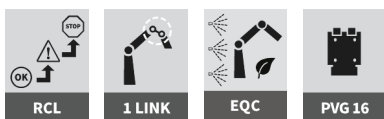
340-K3-MC



340K-RC



Selected basics



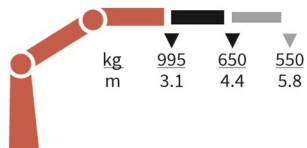
Selected options



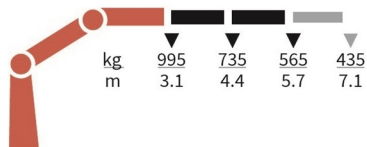
Specifications

| | Unit | 340-K1 | 340-K2 | 340-K3 |
|--|-------|--------|--------|--------|
| | tm | 3,2 | 3,2 | 3,2 |
| | m | 4,39 | 5,76 | 7,15 |
| | kgm | 550 | 600 | 600 |
| | ° | 370 | 370 | 370 |
| | mm | 1591 | 1591 | 1591 |
| | mm | 1700 | 1700 | 1700 |
| | mm | 516 | 516 | 516 |
| | mm | 3300 | 3300 | 3300 |
| | mm | 3900 | 3900 | 3900 |
| | Kg | 418 | 468 | 508 |
| | Kg | 72 | 72 | 72 |
| | bar | 220 | 240 | 240 |
| | l/min | 15 | 15 | 12 |
| | kW | 5,5 | 6,0 | 5,0 |

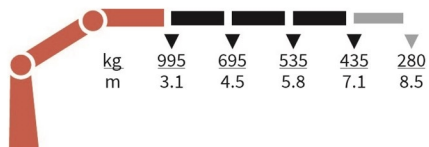
340-K1-RC



340-K2-RC



340-K3-RC



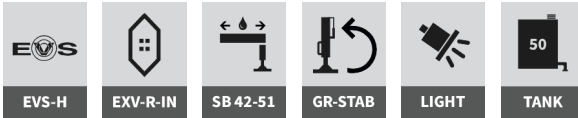
610K-MCS



Selected basics



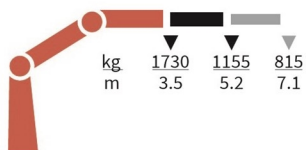
Selected options



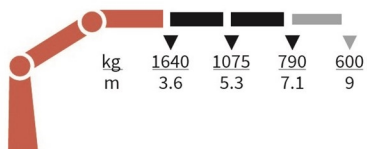
Specifications

| | Unit | 610-K1 | 610-K2 | 610-K3 | 610-K4 |
|--|-------|--------|--------|--------|--------|
| | tm | 6 | 5,9 | 5,6 | 5,5 |
| | m | 5,2 | 7,1 | 9 | 10,8 |
| | kgm | 840 | 840 | 840 | 840 |
| | ° | 400 | 400 | 400 | 400 |
| | mm | 1840 | 1840 | 1860 | 1895 |
| | mm | 2120 | 2120 | 2120 | 2120 |
| | mm | 664 | 664 | 664 | 664 |
| | mm | 3400 | 3400 | 3400 | 3400 |
| | mm | 5200 | 5200 | 5200 | 5200 |
| | Kg | 630 | 705 | 775 | 835 |
| | Kg | 115 | 115 | 115 | 115 |
| | bar | 325 | 325 | 325 | 325 |
| | l/min | 25 | 25 | 25 | 25 |
| | kW | 13 | 13 | 13 | 13 |

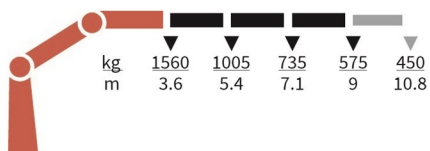
610-K1-MCS



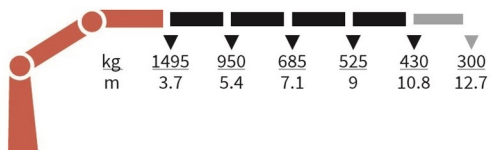
610-K2-MCS



610-K3-MCS



610-K4-MCS



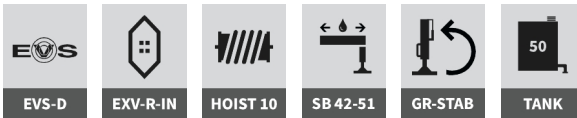
610K-RC



Selected basics



Selected options



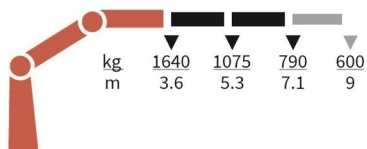
Specifications

| | Unit | 610-K1 | 610-K2 | 610-K3 | 610-K4 |
|--|-------|--------|--------|--------|--------|
| | tm | 6 | 5,9 | 5,6 | 5,5 |
| | m | 5,2 | 7,1 | 9 | 10,8 |
| | kgm | 840 | 840 | 840 | 840 |
| | ° | 400 | 400 | 400 | 400 |
| | mm | 1840 | 1840 | 1860 | 1895 |
| | mm | 2120 | 2120 | 2120 | 2120 |
| | mm | 664 | 664 | 664 | 664 |
| | mm | 3400 | 3400 | 3400 | 3400 |
| | mm | 5200 | 5200 | 5200 | 5200 |
| | Kg | 630 | 705 | 775 | 835 |
| | Kg | 115 | 115 | 115 | 115 |
| | bar | 325 | 325 | 325 | 325 |
| | l/min | 25 | 25 | 25 | 25 |
| | kW | 14 | 14 | 14 | 14 |

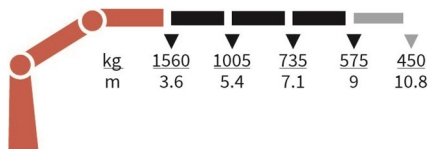
610-K1-RC



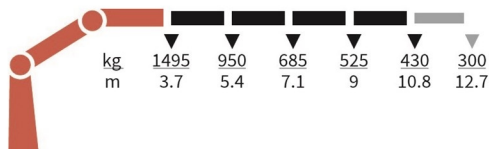
610-K2-RC



610-K3-RC



610-K4-RC



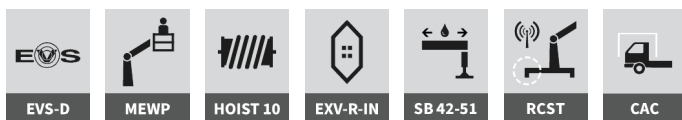
710K-RCS



Selected basics



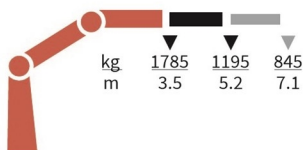
Selected options



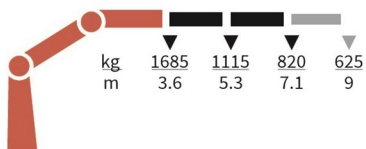
Specifications

| | Unit | 710-K1 | 710-K2 | 710-K3 | 710-K4 |
|--|-------|--------|--------|--------|--------|
| | tm | 6,3 | 6,1 | 5,8 | 5,7 |
| | m | 5,2 | 7,1 | 9 | 10,8 |
| | kgm | 840 | 840 | 840 | 840 |
| | ° | 400 | 400 | 400 | 400 |
| | mm | 1840 | 1840 | 1860 | 1895 |
| | mm | 2120 | 2120 | 2120 | 2120 |
| | mm | 664 | 664 | 664 | 664 |
| | mm | 3400 | 3400 | 3400 | 3400 |
| | mm | 5200 | 5200 | 5200 | 5200 |
| | Kg | 630 | 705 | 775 | 835 |
| | Kg | 115 | 115 | 115 | 115 |
| | bar | 335 | 335 | 335 | 335 |
| | l/min | 40 | 40 | 40 | 40 |
| | kW | 22 | 22 | 22 | 22 |

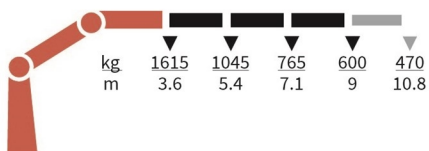
710-K1-RCS



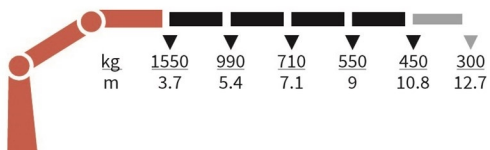
710-K2-RCS



710-K3-RCS



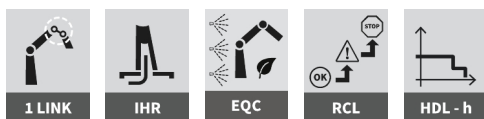
710-K4-RCS



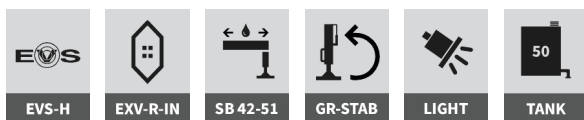
810K-MCS



Selected basics



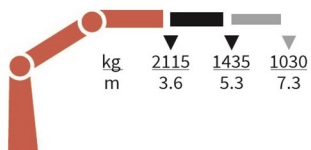
Selected options



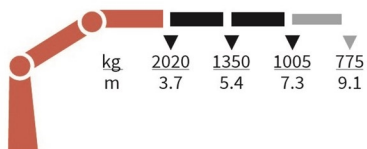
Specifications

| | Unit | 810-K1 | 810-K2 | 810-K3 | 810-K4 |
|--|-------|--------|--------|--------|--------|
| | tm | 7,6 | 7,5 | 7,3 | 7,1 |
| | m | 5,3 | 7,3 | 9,1 | 11 |
| | kgm | 840 | 840 | 840 | 840 |
| | ° | 400 | 400 | 400 | 400 |
| | mm | 1910 | 1910 | 1910 | 1910 |
| | mm | 2220 | 2220 | 2220 | 2220 |
| | mm | 664 | 664 | 664 | 664 |
| | mm | 3400 | 3400 | 3400 | 3400 |
| | mm | 5200 | 5200 | 5200 | 5200 |
| | Kg | 665 | 740 | 810 | 870 |
| | Kg | 115 | 115 | 115 | 115 |
| | bar | 325 | 325 | 325 | 325 |
| | l/min | 35 | 35 | 35 | 35 |
| | kW | 19 | 19 | 19 | 19 |

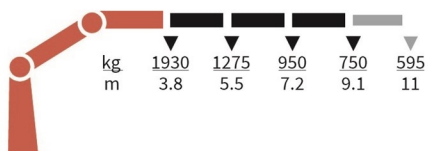
810-K1-MCS



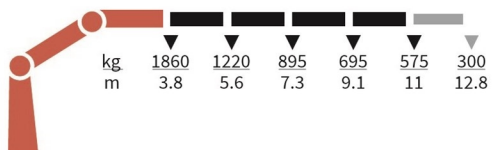
810-K2-MCS



810-K3-MCS



810-K4-MCS



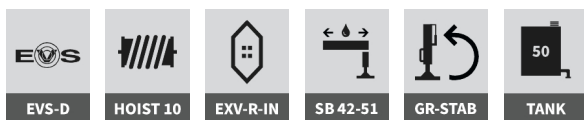
810K-RC



Selected basics



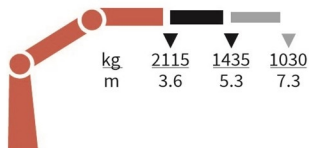
Selected options



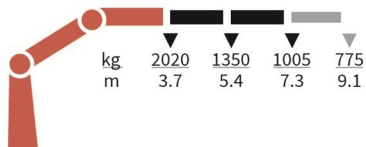
Specifications

| | Unit | 810-K1 | 810-K2 | 810-K3 | 810-K4 |
|--|-------|--------|--------|--------|--------|
| | tm | 7,6 | 7,5 | 7,3 | 7,1 |
| | m | 5,3 | 7,3 | 9,1 | 11 |
| | kgm | 840 | 840 | 840 | 840 |
| | ° | 400 | 400 | 400 | 400 |
| | mm | 1910 | 1910 | 1910 | 1910 |
| | mm | 2220 | 2220 | 2220 | 2220 |
| | mm | 664 | 664 | 664 | 664 |
| | mm | 3400 | 3400 | 3400 | 3400 |
| | mm | 5200 | 5200 | 5200 | 5200 |
| | Kg | 665 | 740 | 810 | 870 |
| | Kg | 115 | 115 | 115 | 115 |
| | bar | 325 | 325 | 325 | 325 |
| | l/min | 35 | 35 | 35 | 35 |
| | kW | 22 | 22 | 22 | 22 |

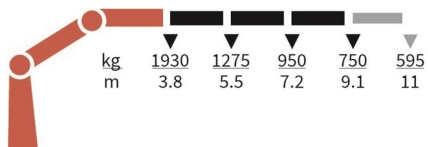
810-K1-RC



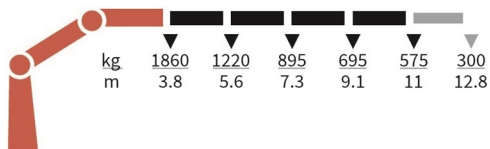
810-K2-RC



810-K3-RC



810-K4-RC



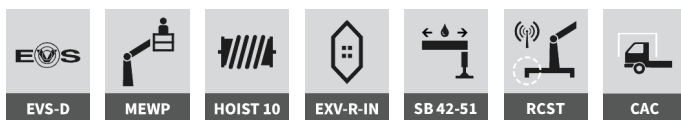
910K-RCS



Selected basics



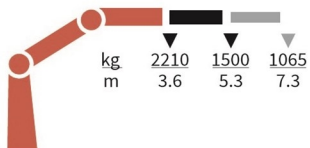
Selected options



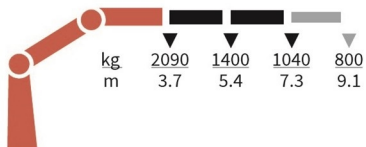
Specifications

| | Unit | 910-K1 | 910-K2 | 910-K3 | 910-K4 |
|--|-------|--------|--------|--------|--------|
| | tm | 8 | 7,7 | 7,6 | 7,3 |
| | m | 5,3 | 7,3 | 9,1 | 11 |
| | kgm | 840 | 840 | 840 | 840 |
| | ° | 400 | 400 | 400 | 400 |
| | mm | 1910 | 1910 | 1910 | 1910 |
| | mm | 2220 | 2220 | 2220 | 2220 |
| | mm | 664 | 664 | 664 | 664 |
| | mm | 3400 | 3400 | 3400 | 3400 |
| | mm | 5200 | 5200 | 5200 | 5200 |
| | Kg | 665 | 740 | 810 | 870 |
| | Kg | 115 | 115 | 115 | 115 |
| | bar | 335 | 335 | 335 | 335 |
| | l/min | 50 | 50 | 50 | 50 |
| | kW | 28 | 28 | 28 | 28 |

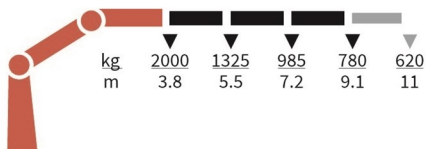
910-K1-RCS



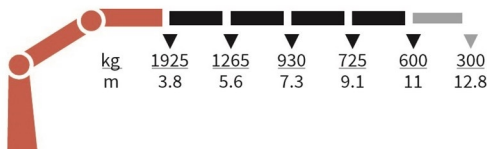
910-K2-RCS



910-K3-RCS



910-K4-RCS



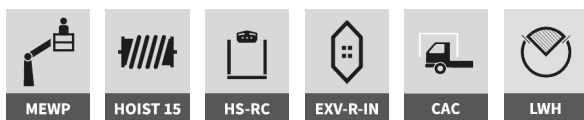
1120K-RCS



Selected basics



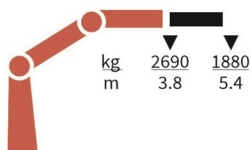
Selected options



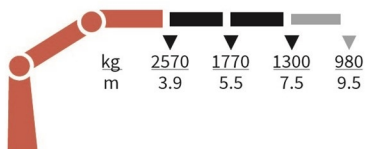
Specifications

| | Unit | 1120-K1 | 1120-K2 | 1120-K3 | 1120-K4 | 1120-K5 |
|--|-------|---------|---------|---------|---------|---------|
| | tm | 10,2 | 9,9 | 9,7 | 9,4 | 9,2 |
| | m | 5,5 | 7,5 | 9,7 | 11,8 | 14 |
| | kgm | 1325 | 1325 | 1325 | 1325 | 1325 |
| | ° | 420 | 420 | 420 | 420 | 420 |
| | mm | 2135 | 2135 | 2135 | 2135 | 2135 |
| | mm | 2350 | 2350 | 2350 | 2350 | 2350 |
| | mm | 747 | 747 | 747 | 747 | 747 |
| | mm | 4165 | 4165 | 4165 | 4165 | 4165 |
| | mm | 5140 | 5140 | 5140 | 5140 | 5140 |
| | Kg | 1000 | 1105 | 1205 | 1295 | 1375 |
| | Kg | 160 | 160 | 160 | 160 | 160 |
| | bar | 345 | 345 | 345 | 345 | 345 |
| | l/min | 60 - 80 | 60 - 80 | 60 - 80 | 60 - 80 | 60 - 80 |
| | kW | 40 - 58 | 40 - 58 | 40 - 58 | 40 - 58 | 40 - 58 |

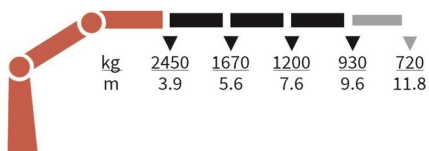
1120-K1-RCS



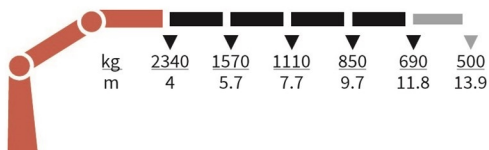
1120-K2-RCS



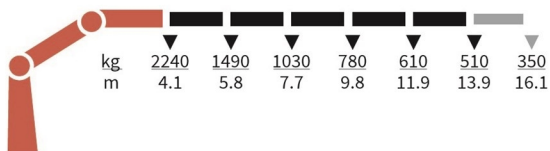
1120-K3-RCS



1120-K4-RCS



1120-K5-RCS



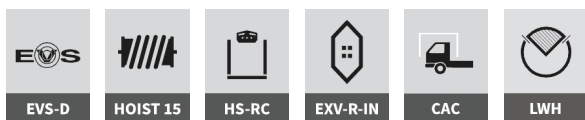
1130K-RCS



Selected basics



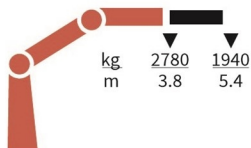
Selected options



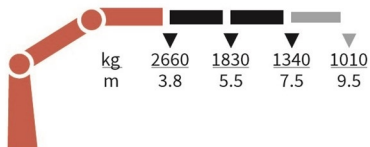
Specifications

| | Unit | 1130-K1 | 1130-K2 | 1130-K3 | 1130-K4 | 1130-K5 |
|--|-------|----------|----------|----------|----------|----------|
| | tm | 10,5 | 10,2 | 9,9 | 9,7 | 9,5 |
| | m | 5,5 | 7,5 | 9,7 | 11,8 | 14 |
| | kgm | 1325 | 1325 | 1325 | 1325 | 1325 |
| | ° | 420 | 420 | 420 | 420 | 420 |
| | mm | 2135 | 2135 | 2135 | 2135 | 2135 |
| | mm | 2350 | 2350 | 2350 | 2350 | 2350 |
| | mm | 747 | 747 | 747 | 747 | 747 |
| | mm | 4165 | 4165 | 4165 | 4165 | 4165 |
| | mm | 5140 | 5140 | 5140 | 5140 | 5140 |
| | Kg | 985 | 1090 | 1190 | 1280 | 1360 |
| | Kg | 160 | 160 | 160 | 160 | 160 |
| | bar | 345 | 345 | 345 | 345 | 345 |
| | l/min | 70 - 100 | 70 - 100 | 70 - 100 | 70 - 100 | 70 - 100 |
| | kW | 40 - 58 | 40 - 58 | 40 - 58 | 40 - 58 | 40 - 58 |

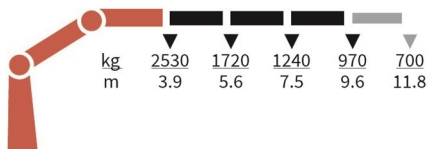
1130-K1-RCS



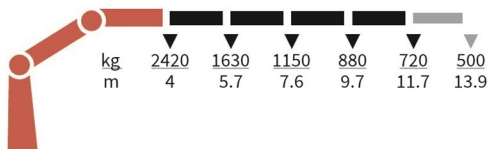
1130-K2-RCS



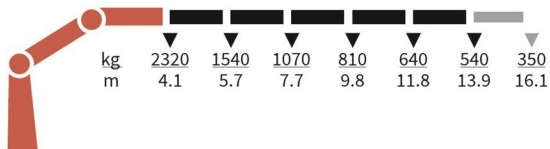
1130-K3-RCS



1130-K4-RCS



1130-K5-RCS



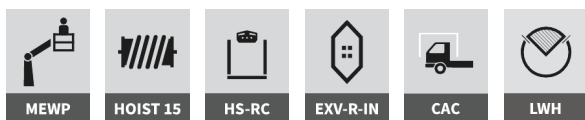
1320K-RCS



Selected basics



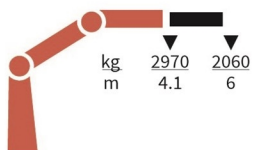
Selected options



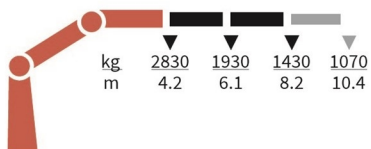
Specifications

| | Unit | 1320-K1 | 1320-K2 | 1320-K3 | 1320-K4 | 1320-K5 |
|--|-------|---------|---------|---------|---------|---------|
| | tm | 12,3 | 11,9 | 11,6 | 11,3 | 11 |
| | m | 6,1 | 8,2 | 10,5 | 12,7 | 15 |
| | kgm | 1325 | 1325 | 1325 | 1325 | 1325 |
| | ° | 420 | 420 | 420 | 420 | 420 |
| | mm | 2135 | 2135 | 2135 | 2135 | 2135 |
| | mm | 2500 | 2500 | 2500 | 2500 | 2500 |
| | mm | 747 | 747 | 747 | 747 | 747 |
| | mm | 4615 | 4615 | 4615 | 4615 | 4615 |
| | mm | 5590 | 5590 | 5590 | 5590 | 5590 |
| | Kg | 1115 | 1240 | 1350 | 1445 | 1530 |
| | Kg | 170 | 170 | 170 | 170 | 170 |
| | bar | 345 | 345 | 345 | 345 | 345 |
| | l/min | 60 - 80 | 60 - 80 | 60 - 80 | 60 - 80 | 60 - 80 |
| | kW | 40 - 58 | 40 - 58 | 40 - 58 | 40 - 58 | 40 - 58 |

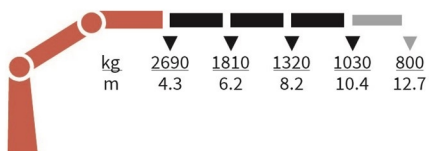
1320-K1-RCS



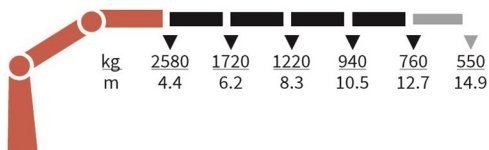
1320-K2-RCS



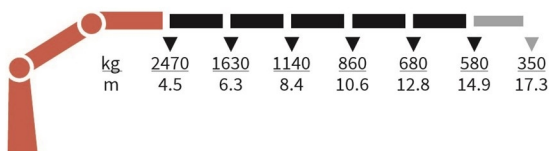
1320-K3-RCS



1320-K4-RCS



1320-K5-RCS



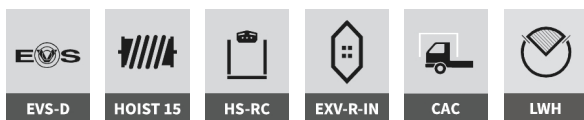
1330K-RCS



Selected basics



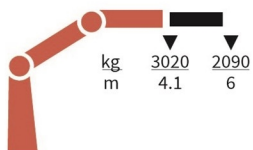
Selected options



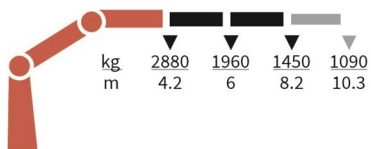
Specifications

| | Unit | 1330-K1 | 1330-K2 | 1330-K3 | 1330-K4 | 1330-K5 |
|--|-------|----------|----------|----------|----------|----------|
| | tm | 12,4 | 12,1 | 11,7 | 11,4 | 11,2 |
| | m | 6,1 | 8,2 | 10,5 | 12,7 | 15 |
| | kgm | 1325 | 1325 | 1325 | 1325 | 1325 |
| | ° | 420 | 420 | 420 | 420 | 420 |
| | mm | 2135 | 2135 | 2135 | 2135 | 2135 |
| | mm | 2500 | 2500 | 2500 | 2500 | 2500 |
| | mm | 747 | 747 | 747 | 747 | 747 |
| | mm | 4615 | 4615 | 4615 | 4615 | 4615 |
| | mm | 5590 | 5590 | 5590 | 5590 | 5590 |
| | Kg | 1080 | 1205 | 1315 | 1410 | 1495 |
| | Kg | 170 | 170 | 170 | 170 | 170 |
| | bar | 345 | 345 | 345 | 345 | 345 |
| | l/min | 70 - 100 | 70 - 100 | 70 - 100 | 70 - 100 | 70 - 100 |
| | kW | 40 - 58 | 40 - 58 | 40 - 58 | 40 - 58 | 40 - 58 |

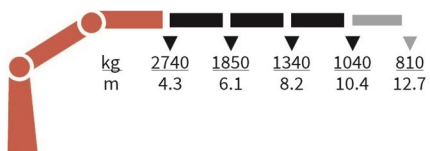
1330-K1-RCS



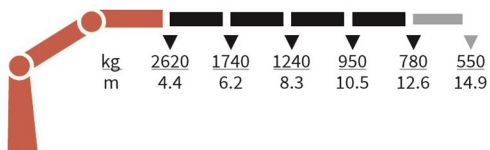
1330-K2-RCS



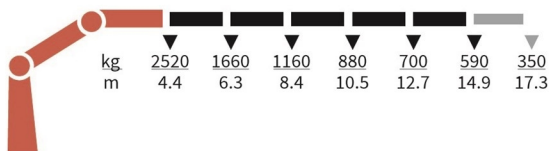
1330-K3-RCS



1330-K4-RCS



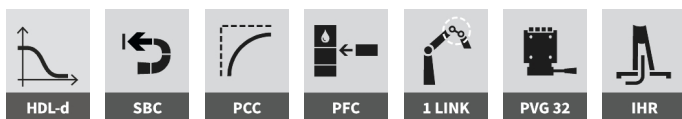
1330-K5-RCS



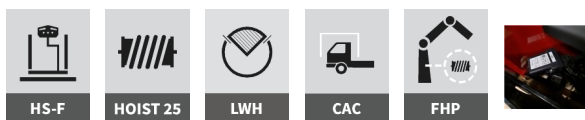
1610K-RCS



Selected basics



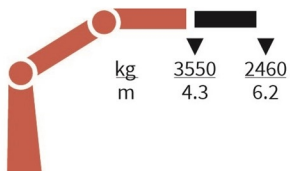
Selected options



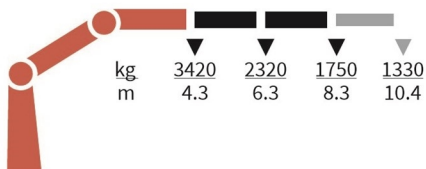
Specifications

| | Unit | 1610-K1 | 1610-K2 | 1610-K3 | 1610-K4 | 1610-K5 | 1610-K6 |
|--|-------|----------|----------|----------|----------|----------|----------|
| | tm | 15,3 | 14,8 | 14,3 | 13,9 | 13,6 | 13,2 |
| | m | 6,3 | 8,4 | 10,5 | 12,8 | 15 | 17,3 |
| | kgm | 1795 | 1795 | 1795 | 1795 | 1795 | 1795 |
| | ° | 400 | 400 | 400 | 400 | 400 | 400 |
| | mm | 2250 | 2250 | 2250 | 2250 | 2250 | 2250 |
| | mm | 2500 | 2500 | 2500 | 2500 | 2500 | 2500 |
| | mm | 830 | 830 | 830 | 830 | 830 | 830 |
| | mm | 4615 | 4615 | 4615 | 4615 | 4615 | 4615 |
| | mm | 6470 | 6470 | 6470 | 6470 | 6470 | 6470 |
| | Kg | 1310 | 1450 | 1590 | 1725 | 1845 | 1940 |
| | Kg | 200 | 200 | 200 | 200 | 200 | 200 |
| | bar | 365 | 365 | 365 | 365 | 365 | 365 |
| | l/min | 70 - 100 | 70 - 100 | 70 - 100 | 70 - 100 | 70 - 100 | 70 - 100 |
| | kW | 43 - 61 | 43 - 61 | 43 - 61 | 43 - 61 | 43 - 61 | 43 - 61 |

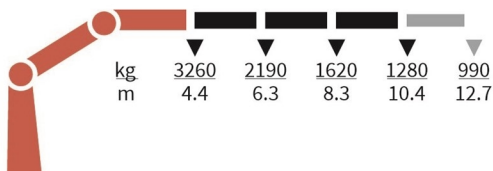
1610-K1-RCS



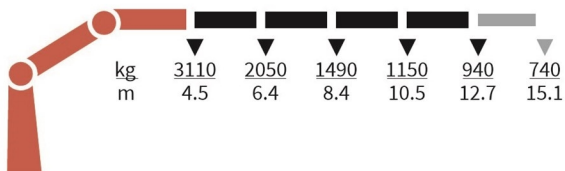
1610-K2-RCS



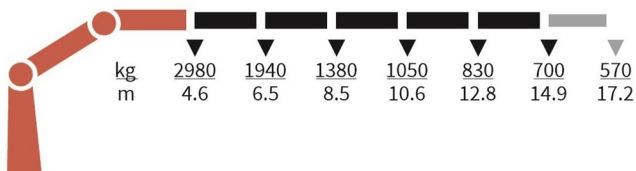
1610-K3-RCS



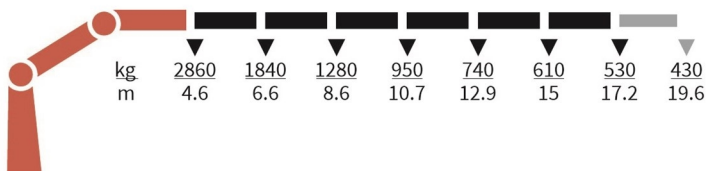
1610-K4-RCS



1610-K5-RCS



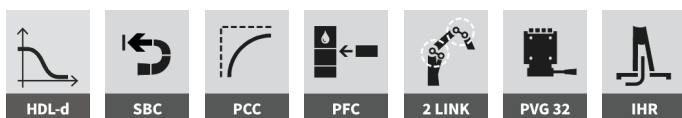
1610-K6-RCS



1620K-RCS



Selected basics



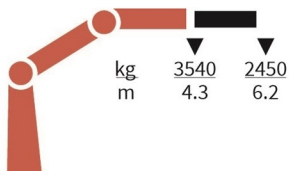
Selected options



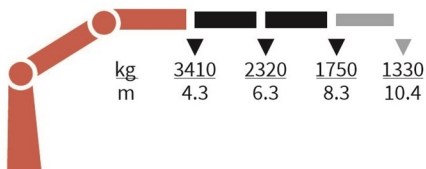
Specifications

| | Unit | 1620-K1 | 1620-K2 | 1620-K3 | 1620-K4 | 1620-K5 | 1620-K6 |
|--|-------|----------|----------|----------|----------|----------|----------|
| | tm | 15,2 | 14,7 | 14,3 | 13,9 | 13,5 | 13,2 |
| | m | 6,3 | 8,4 | 10,5 | 12,8 | 15 | 17,3 |
| | kgm | 1795 | 1795 | 1795 | 1795 | 1795 | 1795 |
| | ° | 400 | 400 | 400 | 400 | 400 | 400 |
| | mm | 2250 | 2250 | 2250 | 2250 | 2250 | 2250 |
| | mm | 2500 | 2500 | 2500 | 2500 | 2500 | 2500 |
| | mm | 830 | 830 | 830 | 830 | 830 | 830 |
| | mm | 4615 | 4615 | 4615 | 4615 | 4615 | 4615 |
| | mm | 6470 | 6470 | 6470 | 6470 | 6470 | 6470 |
| | Kg | 1360 | 1500 | 1640 | 1775 | 1895 | 1990 |
| | Kg | 200 | 200 | 200 | 200 | 200 | 200 |
| | bar | 365 | 365 | 365 | 365 | 365 | 365 |
| | l/min | 70 - 100 | 70 - 100 | 70 - 100 | 70 - 100 | 70 - 100 | 70 - 100 |
| | kW | 43 - 61 | 43 - 61 | 43 - 61 | 43 - 61 | 43 - 61 | 43 - 61 |

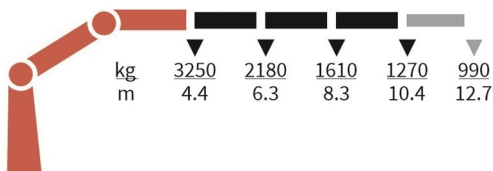
1620-K1-RCS



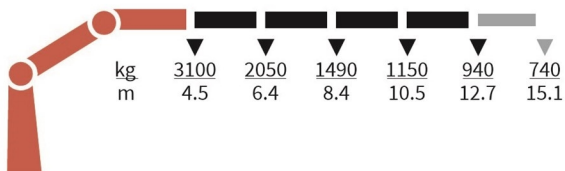
1620-K2-RCS



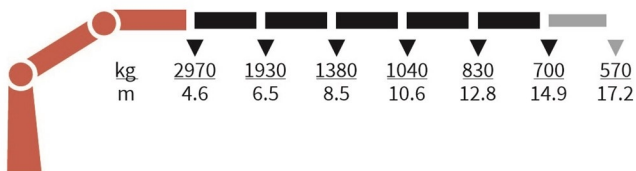
1620-K3-RCS



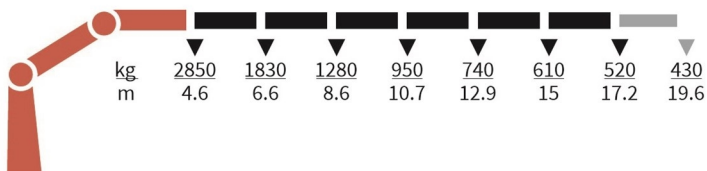
1620-K4-RCS



1620-K5-RCS



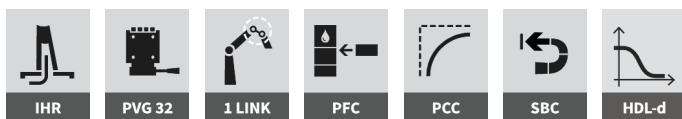
1620-K6-RCS



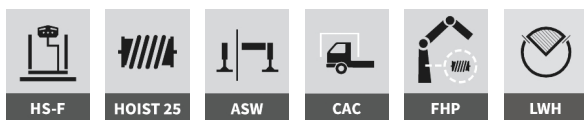
1910K-RCS



Selected basics



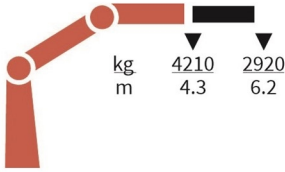
Selected options



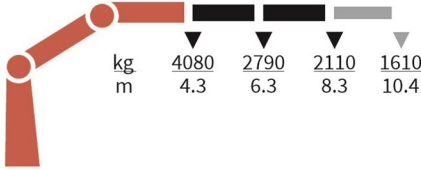
Specifications

| | Unit | 1910-K1 | 1910-K2 | 1910-K3 | 1910-K4 | 1910-K5 | 1910-K6 |
|--|-------|----------|----------|----------|----------|----------|----------|
| | tm | 18,2 | 17,6 | 17,2 | 16,8 | 16,4 | 16,1 |
| | m | 6,3 | 8,4 | 10,5 | 12,8 | 15 | 17,3 |
| | kgm | 1795 | 1795 | 1795 | 1795 | 1795 | 1795 |
| | ° | 400 | 400 | 400 | 400 | 400 | 400 |
| | mm | 2250 | 2250 | 2250 | 2250 | 2250 | 2250 |
| | mm | 2500 | 2500 | 2500 | 2500 | 2500 | 2500 |
| | mm | 830 | 830 | 830 | 830 | 830 | 830 |
| | mm | 4615 | 4615 | 4615 | 4615 | 4615 | 4615 |
| | mm | 6470 | 6470 | 6470 | 6470 | 6470 | 6470 |
| | Kg | 1370 | 1510 | 1650 | 1785 | 1905 | 2000 |
| | Kg | 200 | 200 | 200 | 200 | 200 | 200 |
| | bar | 365 | 365 | 365 | 365 | 365 | 365 |
| | l/min | 70 - 100 | 70 - 100 | 70 - 100 | 70 - 100 | 70 - 100 | 70 - 100 |
| | kW | 43 - 61 | 43 - 61 | 43 - 61 | 43 - 61 | 43 - 61 | 43 - 61 |

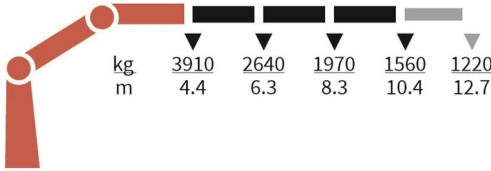
1910-K1-RCS



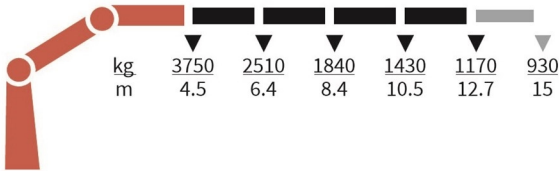
1910-K2-RCS



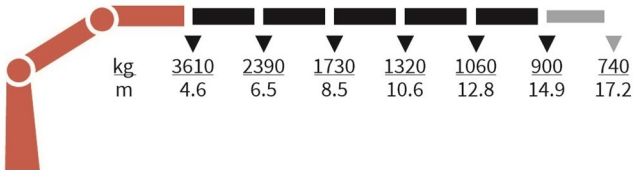
1910-K3-RCS



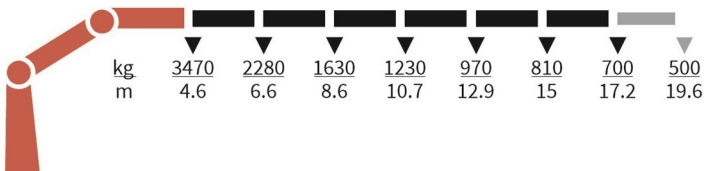
1910-K4-RCS



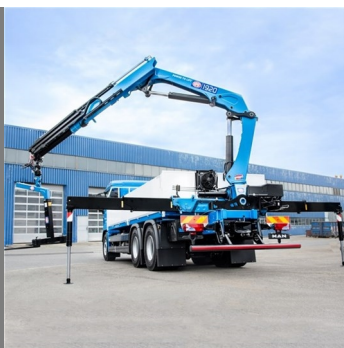
1910-K5-RCS



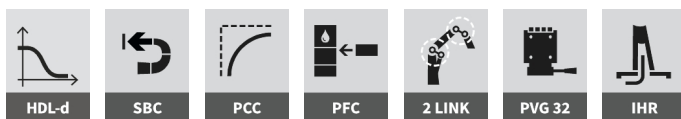
1910-K6-RCS



1920K-RCS



Selected basics



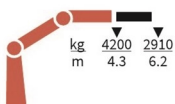
Selected options



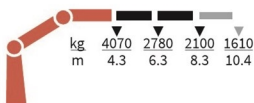
Specifications

| | Unit | 1920-K1 | 1920-K2 | 1920-K3 | 1920-K4 | 1920-K5 | 1920-K6 |
|--|-------|----------|----------|----------|----------|----------|----------|
| | tm | 18,1 | 17,6 | 17,2 | 16,8 | 16,4 | 16,1 |
| | m | 6,3 | 8,4 | 10,5 | 12,8 | 15 | 17,3 |
| | kgm | 1795 | 1795 | 1795 | 1795 | 1795 | 1795 |
| | ° | 400 | 400 | 400 | 400 | 400 | 400 |
| | mm | 2250 | 2250 | 2250 | 2250 | 2250 | 2250 |
| | mm | 2500 | 2500 | 2500 | 2500 | 2500 | 2500 |
| | mm | 830 | 830 | 830 | 830 | 830 | 830 |
| | mm | 4615 | 4615 | 4615 | 4615 | 4615 | 4615 |
| | mm | 6470 | 6470 | 6470 | 6470 | 6470 | 6470 |
| | Kg | 1420 | 1560 | 1700 | 1835 | 1955 | 2050 |
| | Kg | 200 | 200 | 200 | 200 | 200 | 200 |
| | bar | 365 | 365 | 365 | 365 | 365 | 365 |
| | l/min | 70 - 100 | 70 - 100 | 70 - 100 | 70 - 100 | 70 - 100 | 70 - 100 |
| | kW | 43 - 61 | 43 - 61 | 43 - 61 | 43 - 61 | 43 - 61 | 43 - 61 |

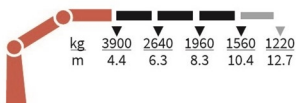
1920-K1-RCS



1920-K2-RCS



1920-K3-RCS



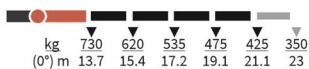
FJ700-K3



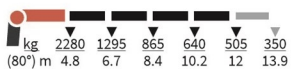
FJ700-K3



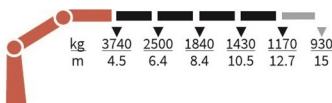
FJ700-K4



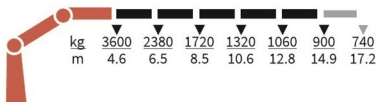
FJ700-K4



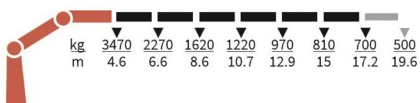
1920-K4-RCS



1920-K5-RCS



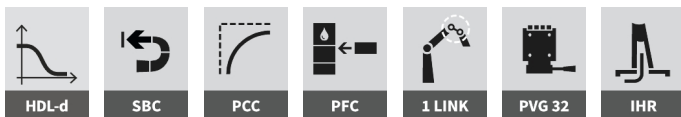
1920-K6-RCS



2310K-RCS



Selected basics



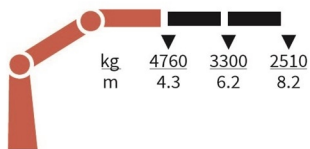
Selected options



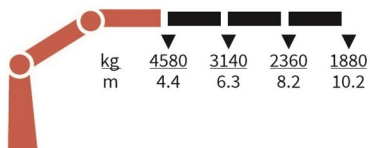
Specifications

| | Unit | 2310-K2 | 2310-K3 | 2310-K4 | 2310-K5 | 2310-K6 | 2310-K7 | 2310-K8 |
|--|-------|----------|----------|----------|----------|----------|----------|----------|
| | tm | 20,6 | 20,2 | 19,7 | 19,2 | 18,8 | 18,4 | 18,1 |
| | m | 8,3 | 10,3 | 12,5 | 14,8 | 17,1 | 19,3 | 21,6 |
| | kgm | 2763 | 2763 | 2763 | 2763 | 2763 | 2763 | 2763 |
| | ° | 400 | 400 | 400 | 400 | 400 | 400 | 400 |
| | mm | 2295 | 2295 | 2295 | 2295 | 2295 | 2295 | 2335 |
| | mm | 2500 | 2500 | 2500 | 2500 | 2500 | 2500 | 2500 |
| | mm | 885 | 885 | 885 | 885 | 885 | 995 | 995 |
| | mm | 5575 | 5575 | 5575 | 5575 | 5575 | 5575 | 5575 |
| | mm | 7400 | 7400 | 7400 | 7400 | 7400 | 7400 | 7400 |
| | Kg | 1800 | 1955 | 2110 | 2250 | 2375 | 2480 | 2565 |
| | Kg | 290 | 290 | 290 | 290 | 290 | 290 | 290 |
| | bar | 365 | 365 | 365 | 365 | 365 | 365 | 365 |
| | l/min | 70 - 100 | 70 - 100 | 70 - 100 | 70 - 100 | 70 - 100 | 70 - 100 | 70 - 100 |
| | kW | 43 - 61 | 43 - 61 | 43 - 61 | 43 - 61 | 43 - 61 | 43 - 61 | 43 - 61 |

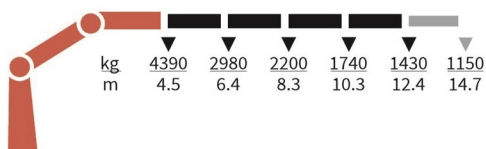
2310-K2-RCS



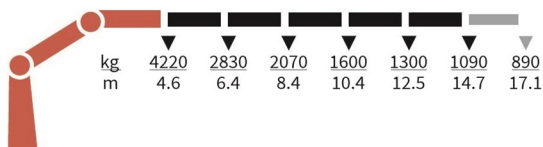
2310-K3-RCS



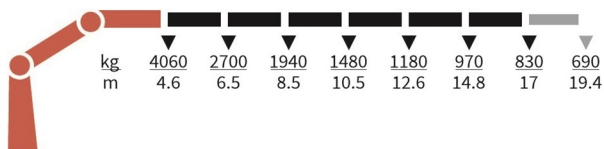
2310-K4-RCS



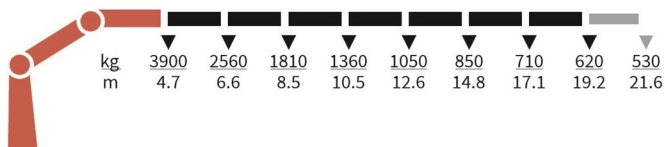
2310-K5-RCS



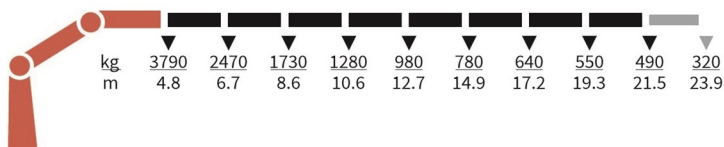
2310-K6-RCS



2310-K7-RCS



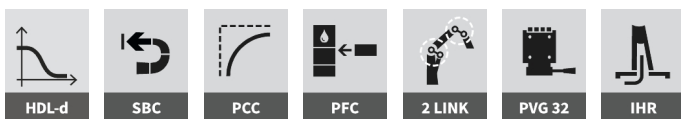
2310-K8-RCS



2320K-RCS



Selected basics



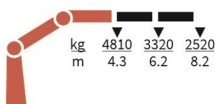
Selected options



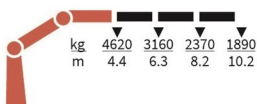
Specifications

| | Unit | 2320-K2 | 2320-K3 | 2320-K4 | 2320-K5 | 2320-K6 | 2320-K7 | 2320-K8 |
|--|-------|----------|----------|----------|----------|----------|----------|----------|
| | tm | 20,8 | 20,3 | 19,9 | 19,4 | 19 | 18,6 | 18,3 |
| | m | 8,3 | 10,3 | 12,5 | 14,8 | 17,1 | 19,3 | 21,6 |
| | kgm | 2763 | 2763 | 2763 | 2763 | 2763 | 2763 | 2763 |
| | ° | 400 | 400 | 400 | 400 | 400 | 400 | 400 |
| | mm | 2295 | 2295 | 2295 | 2295 | 2295 | 2295 | 2335 |
| | mm | 2500 | 2500 | 2500 | 2500 | 2500 | 2500 | 2500 |
| | mm | 885 | 885 | 885 | 885 | 885 | 995 | 995 |
| | mm | 5575 | 5575 | 5575 | 5575 | 5575 | 5575 | 5575 |
| | mm | 7400 | 7400 | 7400 | 7400 | 7400 | 7400 | 7400 |
| | Kg | 1870 | 2025 | 2210 | 2350 | 2475 | 2580 | 2665 |
| | Kg | 290 | 290 | 290 | 290 | 290 | 290 | 290 |
| | bar | 365 | 365 | 365 | 365 | 365 | 365 | 365 |
| | l/min | 70 - 100 | 70 - 100 | 70 - 100 | 70 - 100 | 70 - 100 | 70 - 100 | 70 - 100 |
| | kW | 43 - 61 | 43 - 61 | 43 - 61 | 43 - 61 | 43 - 61 | 43 - 61 | 43 - 61 |

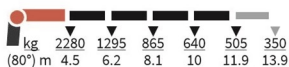
2320-K2-RCS



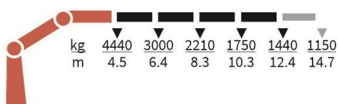
2320-K3-RCS



FJ700-K4



2320-K4-RCS



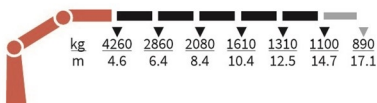
FJ700-K3



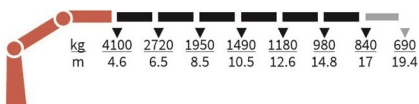
FJ700-K4



2320-K5-RCS



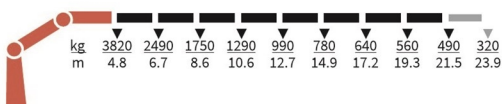
2320-K6-RCS



2320-K7-RCS



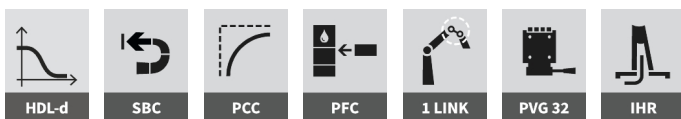
2320-K8-RCS



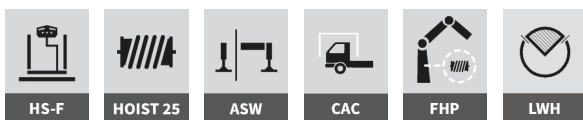
2810K-RCS



Selected basics



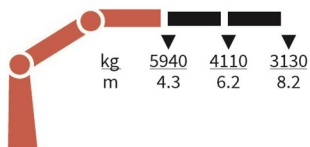
Selected options



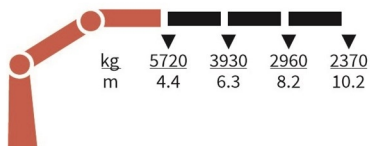
Specifications

| | Unit | 2810-K2 | 2810-K3 | 2810-K4 | 2810-K5 | 2810-K6 | 2810-K7 | 2810-K8 |
|--|-------|----------|----------|----------|----------|----------|----------|----------|
| | tm | 25,7 | 25,2 | 24,6 | 24,2 | 23,8 | 23,4 | 23 |
| | m | 8,3 | 10,3 | 12,5 | 14,8 | 17,1 | 19,3 | 21,6 |
| | kgm | 2763 | 2763 | 2763 | 2763 | 2763 | 2763 | 2763 |
| | ° | 400 | 400 | 400 | 400 | 400 | 400 | 400 |
| | mm | 2295 | 2295 | 2295 | 2295 | 2295 | 2295 | 2335 |
| | mm | 2500 | 2500 | 2500 | 2500 | 2500 | 2500 | 2500 |
| | mm | 885 | 885 | 885 | 885 | 885 | 995 | 995 |
| | mm | 5575 | 5575 | 5575 | 5575 | 5575 | 5575 | 5575 |
| | mm | 7400 | 7400 | 7400 | 7400 | 7400 | 7400 | 7400 |
| | Kg | 1895 | 2065 | 2265 | 2415 | 2555 | 2660 | 2745 |
| | Kg | 290 | 290 | 290 | 290 | 290 | 290 | 290 |
| | bar | 365 | 365 | 365 | 365 | 365 | 365 | 365 |
| | l/min | 70 - 120 | 70 - 120 | 70 - 120 | 70 - 120 | 70 - 120 | 70 - 120 | 70 - 120 |
| | kW | 43 - 73 | 43 - 73 | 43 - 73 | 43 - 73 | 43 - 73 | 43 - 73 | 43 - 73 |

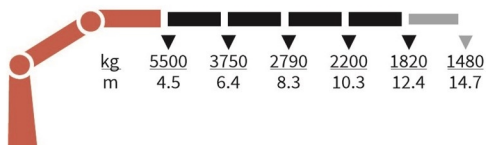
2810-K2-RCS



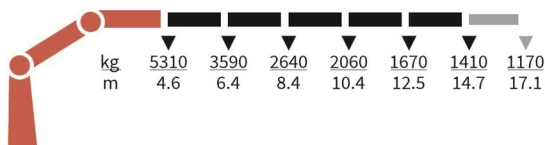
2810-K3-RCS



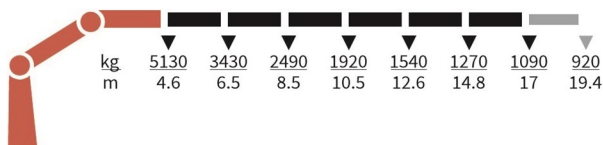
2810-K4-RCS



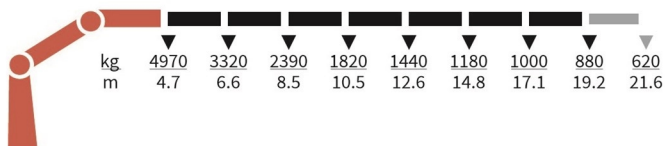
2810-K5-RCS



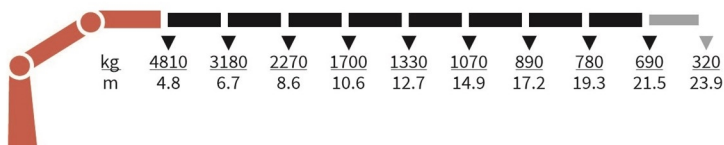
2810-K6-RCS



2810-K7-RCS



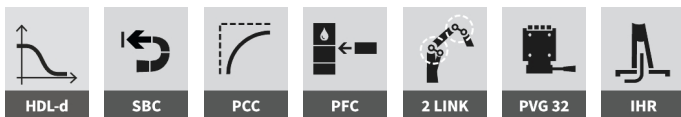
2810-K8-RCS



2820K-RCS



Selected basics



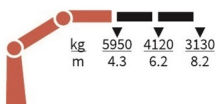
Selected options



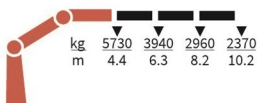
Specifications

| | Unit | 2820-K2 | 2820-K3 | 2820-K4 | 2820-K5 | 2820-K6 | 2820-K7 | 2820-K8 |
|--|-------|----------|----------|----------|----------|----------|----------|----------|
| | tm | 25,8 | 25,2 | 24,7 | 24,3 | 23,8 | 23,5 | 23 |
| | m | 8,3 | 10,3 | 12,5 | 14,8 | 17,1 | 19,3 | 21,6 |
| | kgm | 2763 | 2763 | 2763 | 2763 | 2763 | 2763 | 2763 |
| | ° | 400 | 400 | 400 | 400 | 400 | 400 | 400 |
| | mm | 2295 | 2295 | 2295 | 2295 | 2295 | 2295 | 2335 |
| | mm | 2500 | 2500 | 2500 | 2500 | 2500 | 2500 | 2500 |
| | mm | 885 | 885 | 885 | 885 | 885 | 995 | 995 |
| | mm | 5575 | 5575 | 5575 | 5575 | 5575 | 5575 | 5575 |
| | mm | 7400 | 7400 | 7400 | 7400 | 7400 | 7400 | 7400 |
| | Kg | 1980 | 2150 | 2350 | 2500 | 2640 | 2745 | 2830 |
| | Kg | 290 | 290 | 290 | 290 | 290 | 290 | 290 |
| | bar | 365 | 365 | 365 | 365 | 365 | 365 | 365 |
| | l/min | 70 - 120 | 70 - 120 | 70 - 120 | 70 - 120 | 70 - 120 | 70 - 120 | 70 - 120 |
| | kW | 43 - 73 | 43 - 73 | 43 - 73 | 43 - 73 | 43 - 73 | 43 - 73 | 43 - 73 |

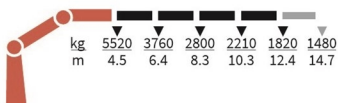
2820-K2-RCS



2820-K3-RCS



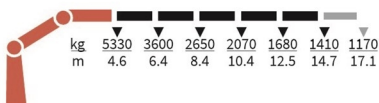
2820-K4-RCS



FJ700-K4



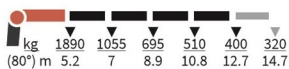
2820-K5-RCS



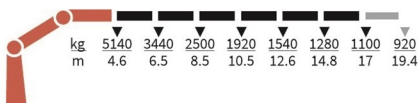
FJ700-K3



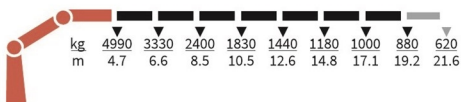
FJ700-K4



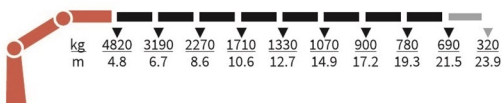
2820-K6-RCS



2820-K7-RCS



2820-K8-RCS



3220K-RCS



Selected basics



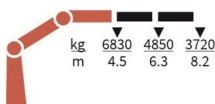
Selected options



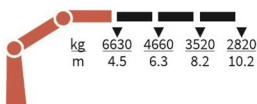
Specifications

| | Unit | 3220-K2 | 3220-K3 | 3220-K4 | 3220-K5 | 3220-K6 | 3220-K7 | 3220-K8 |
|--|-------|----------|----------|----------|----------|----------|----------|----------|
| | tm | 30,7 | 29,8 | 29,5 | 28,7 | 27,9 | 27,8 | 27,1 |
| | m | 8,3 | 10,3 | 12,4 | 14,6 | 16,8 | 19 | 21,3 |
| | kgm | 3800 | 3800 | 3800 | 3800 | 3800 | 3800 | 3800 |
| | ° | ∞ | ∞ | ∞ | ∞ | ∞ | ∞ | ∞ |
| | mm | 2350 | 2350 | 2350 | 2350 | 2350 | 2350 | 2350 |
| | mm | 2500 | 2500 | 2500 | 2500 | 2500 | 2500 | 2500 |
| | mm | 1024 | 1024 | 1024 | 1024 | 1024 | 1130 | 1130 |
| | mm | 5550 | 5550 | 5550 | 5550 | 5550 | 5550 | 5550 |
| | mm | 6430 | 6430 | 6430 | 6430 | 6430 | 6430 | 6430 |
| | Kg | 2590 | 2790 | 2990 | 3160 | 3320 | 3470 | 3595 |
| | Kg | 370 | 370 | 370 | 370 | 370 | 370 | 370 |
| | bar | 365 | 365 | 365 | 365 | 365 | 365 | 365 |
| | l/min | 80 - 130 | 80 - 130 | 80 - 130 | 80 - 130 | 80 - 130 | 80 - 130 | 80 - 130 |
| | kW | 49 - 79 | 49 - 79 | 49 - 79 | 49 - 79 | 49 - 79 | 49 - 79 | 49 - 79 |

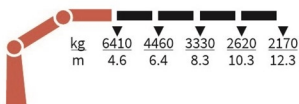
3220-K2-RCS



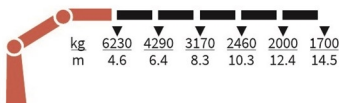
3220-K3-RCS



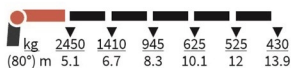
3220-K4-RCS



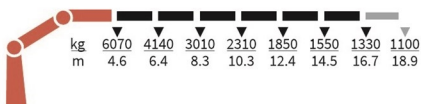
3220-K5-RCS



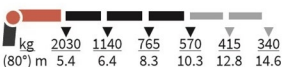
FJ1000-K5



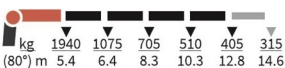
3220-K6-RCS



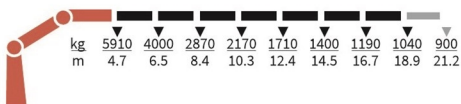
FJ600-K3



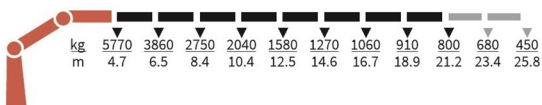
FJ600-K4



3220-K7-RCS



3220-K8-RCS



4020K-RCS



Selected basics



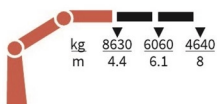
Selected options



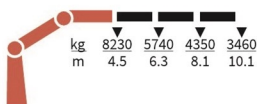
Specifications

| | Unit | 4020-K2 | 4020-K3 | 4020-K4 | 4020-K5 | 4020-K6 | 4020-K7 | 4020-K8 |
|--|-------|----------|----------|----------|----------|----------|----------|----------|
| | tm | 38 | 37 | 35,9 | 34,9 | 34,7 | 33,9 | 33,7 |
| | m | 8,1 | 10,1 | 12,2 | 14,35 | 16,6 | 18,95 | 21,3 |
| | kgm | 4000 | 4000 | 4000 | 4000 | 4000 | 4000 | 4000 |
| | ° | ∞ | ∞ | ∞ | ∞ | ∞ | ∞ | ∞ |
| | mm | 2384 | 2384 | 2384 | 2384 | 2384 | 2384 | 2384 |
| | mm | 2518 | 2518 | 2518 | 2518 | 2518 | 2518 | 2518 |
| | mm | 1148 | 1148 | 1148 | 1148 | 1148 | 1274 | 1274 |
| | mm | 5550 | 5550 | 5550 | 5550 | 5550 | 5550 | 5550 |
| | mm | 7770 | 7770 | 7770 | 7770 | 7770 | 7770 | 7770 |
| | Kg | 3150 | 3410 | 3660 | 3900 | 4080 | 4240 | 4400 |
| | Kg | 470 | 470 | 470 | 470 | 470 | 470 | 470 |
| | bar | 365 | 365 | 365 | 365 | 365 | 365 | 365 |
| | l/min | 80 - 110 | 80 - 110 | 80 - 110 | 80 - 110 | 80 - 110 | 80 - 110 | 80 - 110 |
| | kW | 49 - 68 | 49 - 68 | 49 - 68 | 49 - 68 | 49 - 68 | 49 - 68 | 49 - 68 |

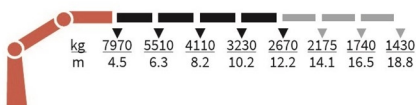
4020-K2-RCS



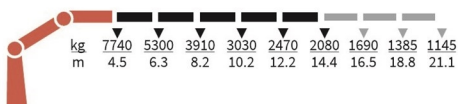
4020-K3-RCS



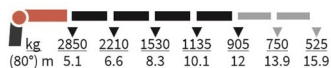
4020-K4-RCS



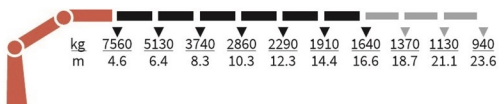
4020-K5-RCS



FJ1000-K4



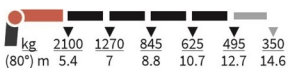
4020-K6-RCS



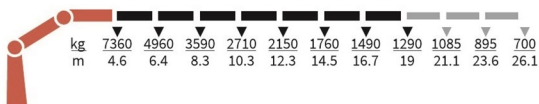
FJ600-K3



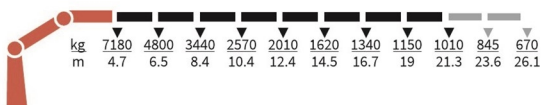
FJ600-K4



4020-K7-RCS



4020-K8-RCS



5020K-RCS



Selected basics



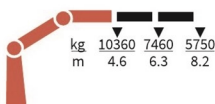
Selected options



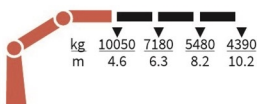
Specifications

| | Unit | 5020-K2 | 5020-K3 | 5020-K4 | 5020-K5 | 5020-K6 | 5020-K7 | 5020-K8 |
|--|-------|----------|----------|----------|----------|----------|----------|----------|
| | tm | 47,7 | 46,2 | 45,9 | 44,7 | 43,6 | 43,4 | 42,4 |
| | m | 8,25 | 10,25 | 12,5 | 14,5 | 16,75 | 19,1 | 21,45 |
| | kgm | 5000 | 5000 | 5000 | 5000 | 5000 | 5000 | 5000 |
| | ° | ∞ | ∞ | ∞ | ∞ | ∞ | ∞ | ∞ |
| | mm | 2398 | 2398 | 2398 | 2398 | 2398 | 2438 | 2438 |
| | mm | 2519 | 2519 | 2519 | 2519 | 2519 | 2519 | 2519 |
| | mm | 1198 | 1198 | 1198 | 1198 | 1198 | 1298 | 1298 |
| | mm | 5550 | 5550 | 5550 | 5550 | 5550 | 5550 | 5550 |
| | mm | 7770 | 7770 | 7770 | 7770 | 7770 | 7770 | 7770 |
| | Kg | 3610 | 3900 | 4170 | 4420 | 4620 | 4800 | 4975 |
| | Kg | 500 | 500 | 500 | 500 | 500 | 500 | 500 |
| | bar | 365 | 365 | 365 | 365 | 365 | 365 | 365 |
| | l/min | 80 - 110 | 80 - 110 | 80 - 110 | 80 - 110 | 80 - 110 | 80 - 110 | 80 - 110 |
| | kW | 49 - 68 | 49 - 68 | 49 - 68 | 49 - 68 | 49 - 68 | 49 - 68 | 49 - 68 |

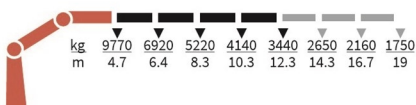
5020-K2-RCS



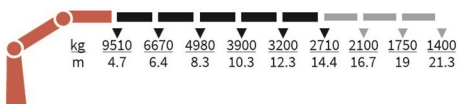
5020-K3-RCS



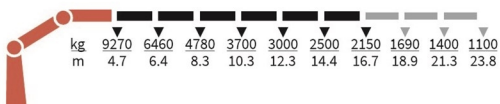
5020-K4-RCS



5020-K5-RCS



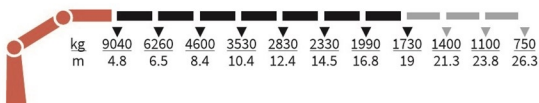
5020-K6-RCS



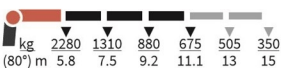
FJ1000-K5



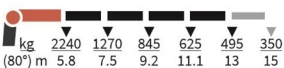
5020-K7-RCS



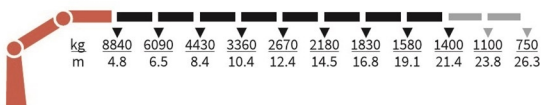
FJ600-K3



FJ600-K4



5020-K8-RCS



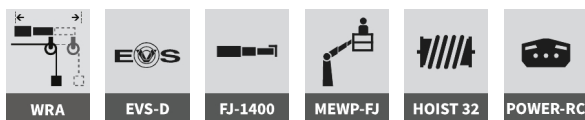
7020K-RCS



Selected basics



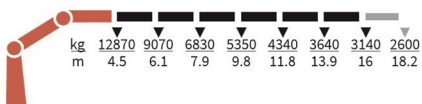
Selected options



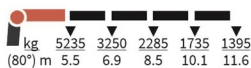
Specifications

| | Unit | 7020-K6 | 7020-K7 | 7020-K8 |
|--|-------|----------|----------|----------|
| | tm | 57,9 | 57,2 | 56,1 |
| | m | 16,1 | 18,3 | 20,6 |
| | kgm | 7142 | 7142 | 7142 |
| | ° | ∞ | ∞ | ∞ |
| | mm | 2435 | 2435 | 2455 |
| | mm | 2550 | 2550 | 2550 |
| | mm | 1540 | 1540 | 1540 |
| | mm | | | |
| | mm | 8420 | 8420 | 8420 |
| | Kg | 5715 | 5915 | 6115 |
| | Kg | 925 | 925 | 925 |
| | bar | 375 | 375 | 375 |
| | l/min | 80 - 120 | 80 - 120 | 80 - 120 |
| | kW | 50 - 75 | 50 - 75 | 50 - 75 |

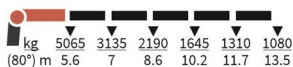
7020-K6-RCS



FJ1400-K4



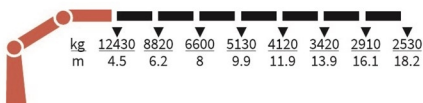
FJ1400-K5



FJ1400-K6



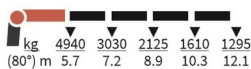
7020-K7-RCS



FJ1400-K3



FJ1400-K4



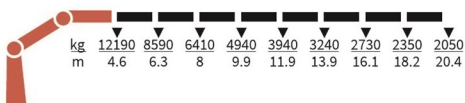
FJ1400-K5



FJ1400-K6



7020-K8-RCS



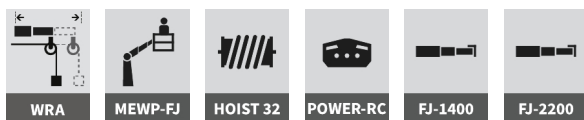
9520K-RCS



Selected basics



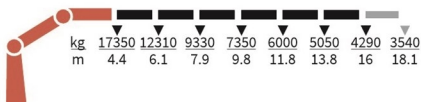
Selected options



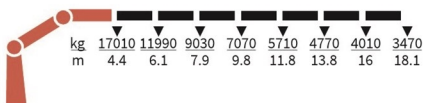
Specifications

| Unit | 9520-K6 | 9520-K7 | 9520-K8 | |
|------|---------|----------|----------|----------|
| ↑ | tm | 76,3 | 75,1 | 75 |
| → | m | 16,1 | 18,3 | 20,3 |
| ↻ | kgm | 8163 | 8163 | 8163 |
| ↻ | ° | ∞ | ∞ | ∞ |
| ↘ | mm | 2500 | 2500 | 2500 |
| ↙ | mm | 2550 | 2550 | 2550 |
| ↗ | mm | 1630 | 1630 | 1630 |
| ↖ | mm | | | |
| ↘ | mm | 8420 | 8420 | 8420 |
| ⚖ | Kg | 7070 | 7330 | 7540 |
| ⚖ | Kg | 1025 | 1025 | 1025 |
| ⌚ | bar | 365 | 365 | 365 |
| ⚙ | l/min | 80 - 120 | 80 - 120 | 80 - 120 |
| ⚡ | kW | 50 - 82 | 50 - 82 | 50 - 82 |

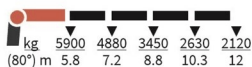
9520-K6-RCS



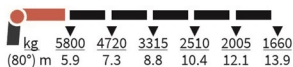
9520-K7-RCS



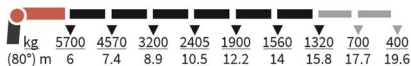
FJ2200-K4



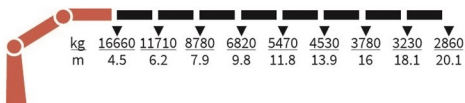
FJ2200-K5



FJ2200-K6



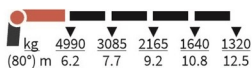
9520-K8-RCS



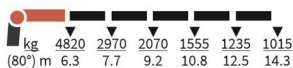
FJ1400-K3



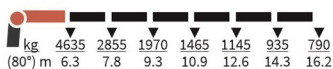
FJ1400-K4



FJ1400-K5



FJ1400-K6



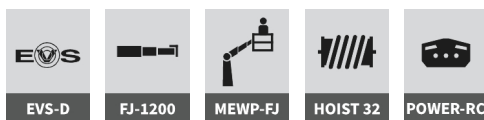
70200K-RCS



Selected basics



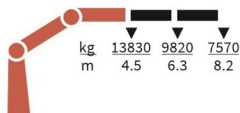
Selected options



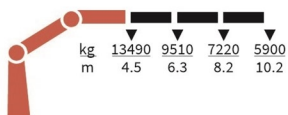
Specifications

| | Unit | 7020-OK2 | 7020-OK3 | 7020-OK4 | 7020-OK5 | 7020-OK6 |
|--|-------|----------|----------|----------|----------|----------|
| | tm | 62,2 | 60,7 | 60 | 58,3 | 58,2 |
| | m | 8,3 | 10,4 | 12,4 | 14,7 | 17 |
| | kgm | 7142 | 7142 | 7142 | 7142 | 7142 |
| | ° | ∞ | ∞ | ∞ | ∞ | ∞ |
| | mm | 2435 | 2435 | 2435 | 2435 | 2470 |
| | mm | 2550 | 2550 | 2550 | 2550 | 2550 |
| | mm | 1340 | 1340 | 1340 | 1340 | 1340 |
| | mm | | | | | |
| | mm | 8420 | 8420 | 8420 | 8420 | 8420 |
| | Kg | 4465 | 4765 | 5065 | 5335 | 5575 |
| | Kg | 925 | 925 | 925 | 925 | 925 |
| | bar | 375 | 375 | 375 | 375 | 375 |
| | l/min | 50 - 120 | 50 - 120 | 50 - 120 | 50 - 120 | 50 - 120 |
| | kW | 50 - 69 | 50 - 69 | 50 - 69 | 50 - 69 | 50 - 69 |

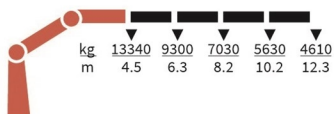
7020-OK2-RCS



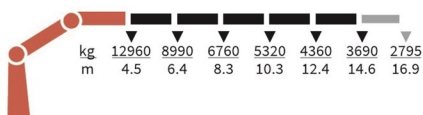
7020-OK3-RCS



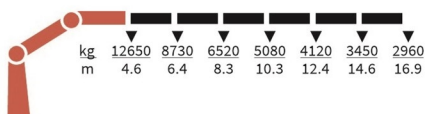
7020-OK4-RCS



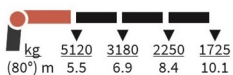
7020-OK5-RCS



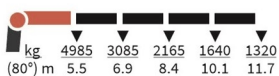
7020-OK6-RCS



FJ1200-K3



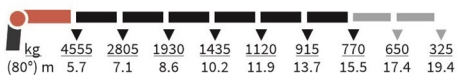
FJ1200-K4



FJ1200-K5



FJ1200-K6



95200K-RCS



Selected basics



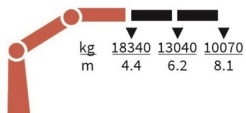
Selected options



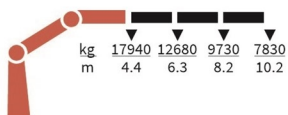
Specifications

| Unit | 9520-OK2 | 9520-OK3 | 9520-OK4 | 9520-OK5 | 9520-OK6 |
|-------|----------|----------|----------|----------|----------|
| tm | 80,1 | 79,1 | 77,9 | 77,1 | 76 |
| m | 8,3 | 10,34 | 12,4 | 14,64 | 16,94 |
| kgm | 8163 | 8163 | 8163 | 8163 | 8163 |
| ° | ∞ | ∞ | ∞ | ∞ | ∞ |
| mm | 2500 | 2500 | 2500 | 2500 | 2510 |
| mm | 2550 | 2550 | 2550 | 2550 | 2550 |
| mm | 1440 | 1440 | 1440 | 1440 | 1440 |
| mm | | | | | |
| mm | 8420 | 8420 | 8420 | 8420 | 8420 |
| Kg | 5670 | 6020 | 6360 | 6665 | 6930 |
| Kg | 1025 | 1025 | 1025 | 1025 | 1025 |
| bar | 365 | 365 | 365 | 365 | 365 |
| l/min | 80 - 120 | 80 - 120 | 80 - 120 | 80 - 120 | 80 - 120 |
| kW | 50 - 82 | 50 - 82 | 50 - 82 | 50 - 82 | 50 - 82 |

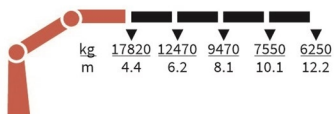
9520-OK2-RCS



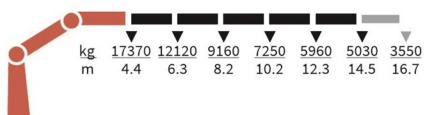
9520-OK3-RCS



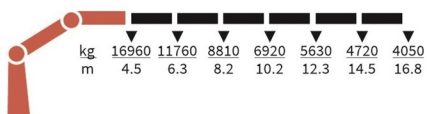
9520-OK4-RCS



9520-OK5-RCS



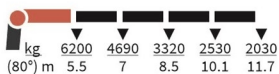
9520-OK6-RCS



FJ2000-K3



FJ2000-K4



FJ2000-K5



FJ2000-K6



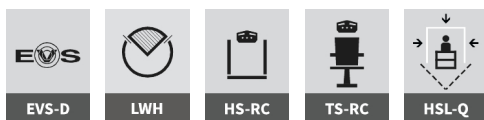
1320KS-RCS



Selected basics



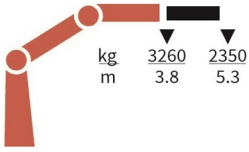
Selected options



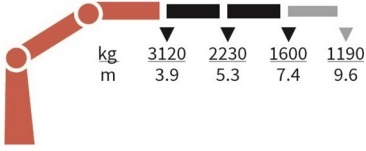
Specifications

| | Unit | 1320-KS1 | 1320-KS2 | 1320-KS3 |
|--|-------|----------|----------|----------|
| | tm | 12,3 | 12 | 11,7 |
| | m | 5,3 | 7,5 | 9,8 |
| | kgm | 1325 | 1325 | 1325 |
| | ° | 420 | 420 | 420 |
| | mm | 2135 | 2135 | 2135 |
| | mm | 2500 | 2500 | 2500 |
| | mm | 747 | 747 | 747 |
| | mm | 4615 | 4615 | 4615 |
| | mm | 5590 | 5590 | 5590 |
| | Kg | 1100 | 1225 | 1335 |
| | Kg | 170 | 170 | 170 |
| | bar | 345 | 345 | 345 |
| | l/min | 70 - 100 | 70 - 100 | 70 - 100 |
| | kW | 40 - 58 | 40 - 58 | 40 - 58 |

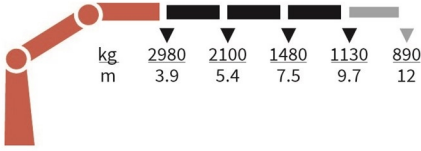
1320-KS1-RCS



1320-KS2-RCS



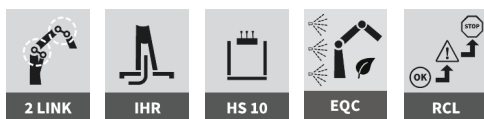
1320-KS3-RCS



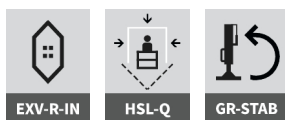
1800K-HS10



Selected basics



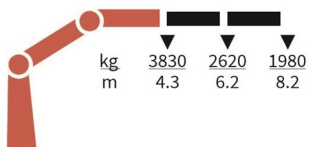
Selected options



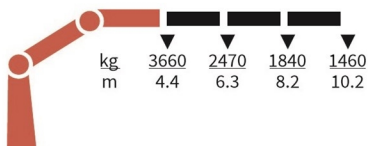
Specifications

| | Unit | 1800-K2 | 1800-K3 | 1800-K4 | 1800-K5 | 1800-K6 | 1800-K7 | 1800-K8 |
|--|-------|---------|---------|---------|---------|---------|---------|---------|
| | tm | 16,6 | 16,1 | 15,6 | 15,2 | 14,7 | 14,3 | 14 |
| | m | 8,3 | 10,3 | 12,5 | 14,8 | 17,1 | 19,3 | 21,6 |
| | kgm | 2426 | 2426 | 2426 | 2426 | 2426 | 2426 | 2426 |
| | ° | 400 | 400 | 400 | 400 | 400 | 400 | 400 |
| | mm | 2295 | 2295 | 2295 | 2295 | 2295 | 2295 | 2335 |
| | mm | 2500 | 2500 | 2500 | 2500 | 2500 | 2500 | 2500 |
| | mm | 885 | 885 | 885 | 885 | 885 | 995 | 995 |
| | mm | 5575 | 5575 | 5575 | 5575 | 5575 | 5575 | 5575 |
| | mm | 6455 | 6455 | 6455 | 6455 | 6455 | 6455 | 6455 |
| | Kg | 1840 | 1995 | 2180 | 2320 | 2445 | 2550 | 2635 |
| | Kg | 275 | 275 | 275 | 275 | 275 | 275 | 275 |
| | bar | 300 | 300 | 300 | 300 | 300 | 300 | 300 |
| | l/min | 55 | 55 | 55 | 55 | 55 | 55 | 55 |
| | kW | 28 | 28 | 28 | 28 | 28 | 28 | 28 |

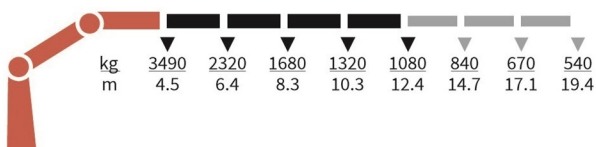
1800-K2-HS10-MC



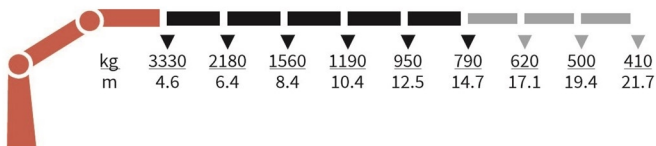
1800-K3-HS10-MC



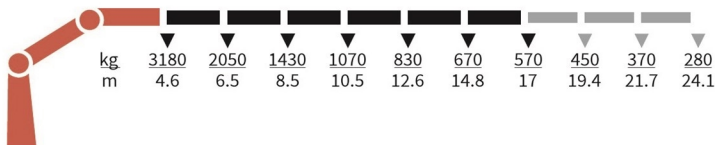
1800-K4-HS10-MC



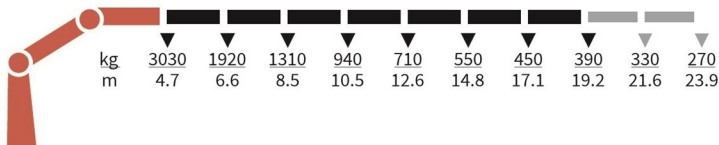
1800-K5-HS10-MC



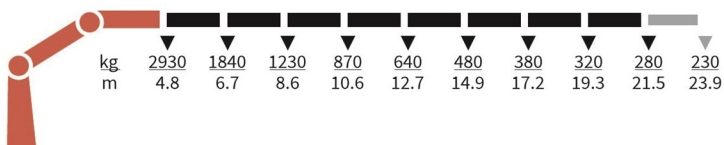
1800-K6-HS10-MC



1800-K7-HS10-MC



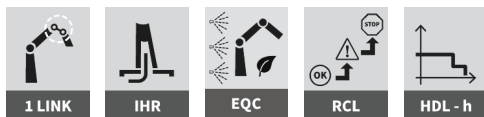
1800-K8-HS10-MC



1530T-MCS



Selected basics



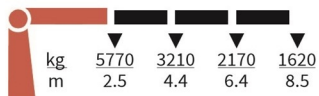
Selected options



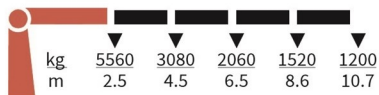
Specifications

| | Unit | 1530-T3 | 1530-T4 |
|--|-------|---------|---------|
| | tm | 14,3 | 14,2 |
| | m | 8,5 | 10,7 |
| | kgm | 1760 | 1760 |
| | ° | 400 | 400 |
| | mm | 2560 | 2560 |
| | mm | 2500 | 2500 |
| | mm | 765 | 765 |
| | mm | 4615 | 4615 |
| | mm | 6470 | 6470 |
| | Kg | 1320 | 1440 |
| | Kg | 200 | 200 |
| | bar | 330 | 330 |
| | l/min | 45 | 45 |
| | kW | 25 | 25 |

1530-T3-MCS



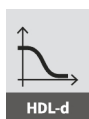
1530-T4-MCS



1630T-RCS



Selected basics



HDL-d



PCC



PFC



1 LINK



PVG 32



IHR



EQC

Selected options



RCST



LCTRL



IILH



SLB



CH-VAL

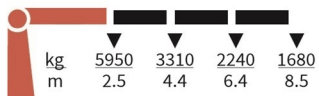


LWH

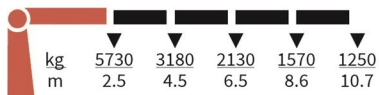
Specifications

| | Unit | 1630-T3 | 1630-T4 |
|--|-------|---------|---------|
| | tm | 14,7 | 14,6 |
| | m | 8,5 | 10,7 |
| | kgm | 1760 | 1760 |
| | ° | 400 | 400 |
| | mm | 2560 | 2560 |
| | mm | 2500 | 2500 |
| | mm | 765 | 765 |
| | mm | 4615 | 4615 |
| | mm | 6470 | 6470 |
| | Kg | 1320 | 1440 |
| | Kg | 200 | 200 |
| | bar | 340 | 340 |
| | l/min | 55 | 55 |
| | kW | 31 | 31 |

1630-T3-RCS



1630-T4-RCS



1910T-MC



Selected basics



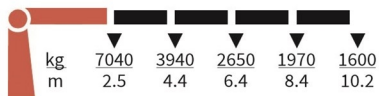
Selected options



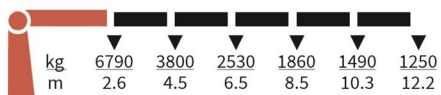
Specifications

| | Unit | 1910-T4 | 1910-T5 |
|--|-------|---------|---------|
| | tm | 17,9 | 17,8 |
| | m | 10,2 | 12,2 |
| | kgm | 2380 | 2380 |
| | ° | 400 | 400 |
| | mm | 2610 | 2610 |
| | mm | 2500 | 2500 |
| | mm | 820 | 820 |
| | mm | 5575 | 5575 |
| | mm | 6455 | 6455 |
| | Kg | 1695 | 1815 |
| | Kg | 275 | 275 |
| | bar | 300 | 300 |
| | l/min | 55 | 55 |
| | kW | 28 | 28 |

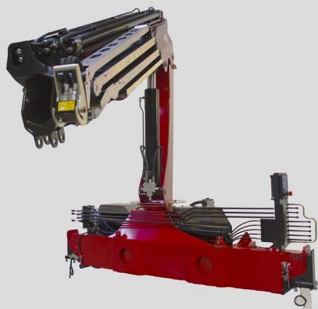
1910-T4-MC



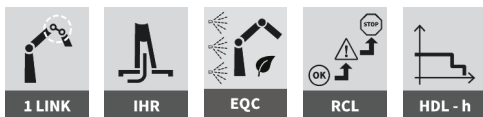
1910-T5-MC



2030T-MCS



Selected basics



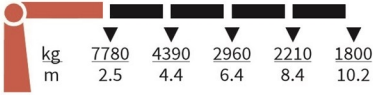
Selected options



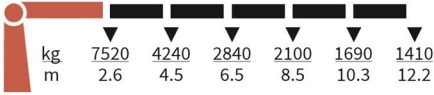
Specifications

| | Unit | 2030-T4 | 2030-T5 |
|--|-------|---------|---------|
| | tm | 19,8 | 19,7 |
| | m | 10,2 | 12,2 |
| | kgm | 2380 | 2380 |
| | ° | 400 | 400 |
| | mm | 2610 | 2610 |
| | mm | 2500 | 2500 |
| | mm | 820 | 820 |
| | mm | 5575 | 5575 |
| | mm | 6455 | 6455 |
| | Kg | 1695 | 1815 |
| | Kg | 275 | 275 |
| | bar | 330 | 330 |
| | l/min | 55 | 55 |
| | kW | 30 | 30 |

2030-T4-MCS



2030-T5-MCS



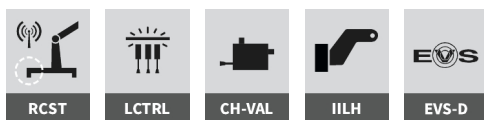
2130T-RCS



Selected basics



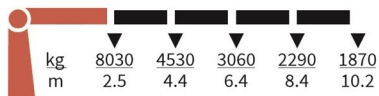
Selected options



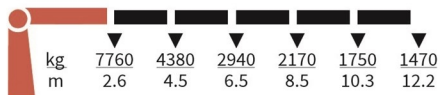
Specifications

| | Unit | 2130-T4 | 2130-T5 |
|--|-------|---------|---------|
| | tm | 20,4 | 20,3 |
| | m | 10,2 | 12,2 |
| | kgm | 2380 | 2380 |
| | ° | 400 | 400 |
| | mm | 2610 | 2610 |
| | mm | 2500 | 2500 |
| | mm | 820 | 820 |
| | mm | 5575 | 5575 |
| | mm | 6455 | 6455 |
| | Kg | 1695 | 1815 |
| | Kg | 275 | 275 |
| | bar | 340 | 340 |
| | l/min | 55 | 55 |
| | kW | 31 | 31 |

2130-T4-RCS



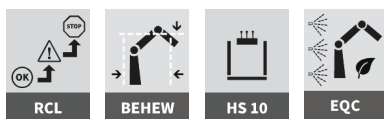
2130-T5-RCS



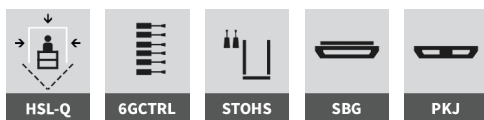
1444Z-RC



Selected basics

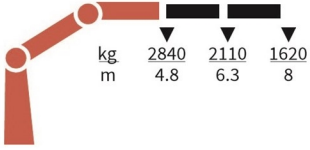


Selected options



Specifications

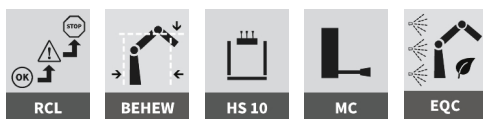
| | Unit | 1444-Z2 |
|--|-------|---------|
| | tm | 13,7 |
| | m | 8,2 |
| | kgm | 2400 |
| | ° | 400 |
| | mm | 2427 |
| | mm | 2500 |
| | mm | 750 |
| | mm | 3500 |
| | mm | 4600 |
| | Kg | 1740 |
| | Kg | 210 |
| | bar | 280 |
| | l/min | 70 |
| | kW | 33 |



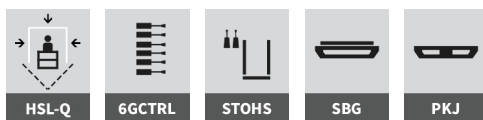
1643Z-MC



Selected basics

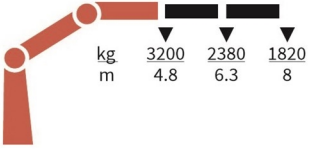


Selected options



Specifications

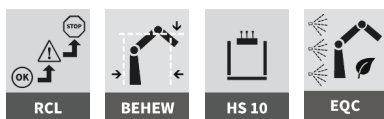
| | Unit | 1643-Z2 |
|--|-------|---------|
| | tm | 15,4 |
| | m | 8,2 |
| | kgm | 2400 |
| | ° | 400 |
| | mm | 2427 |
| | mm | 2500 |
| | mm | 750 |
| | mm | 3500 |
| | mm | 4600 |
| | Kg | 1740 |
| | Kg | 210 |
| | bar | 310 |
| | l/min | 50 |
| | kW | 26 |



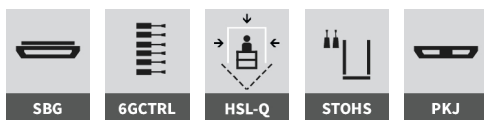
1643Z-RC



Selected basics



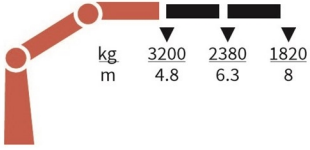
Selected options



Specifications

| | Unit | 1643-Z2 |
|--|-------|---------|
| | tm | 15,4 |
| | m | 8,2 |
| | kgm | 2400 |
| | ° | 400 |
| | mm | 2427 |
| | mm | 2500 |
| | mm | 750 |
| | mm | 3500 |
| | mm | 4600 |
| | Kg | 1740 |
| | Kg | 210 |
| | bar | 310 |
| | l/min | 50 |
| | kW | 26 |

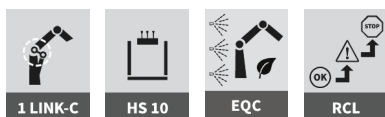
1643-Z2-RC



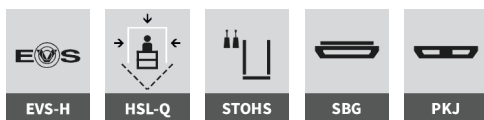
1943Z-MC



Selected basics



Selected options



Specifications

| | Unit | 1943-Z2 |
|--|-------|---------|
| | tm | 18,1 |
| | m | 9,1 |
| | kgm | 2750 |
| | ° | 400 |
| | mm | 2445 |
| | mm | 2500 |
| | mm | 885 |
| | mm | 5575 |
| | mm | 6455 |
| | Kg | 2300 |
| | Kg | 290 |
| | bar | 295 |
| | l/min | 60 - 80 |
| | kW | 30 - 40 |

1943-Z2-MC



2243Z-RCS



Selected basics



HDL-d



PCC



PFC



PVG 32



IHR



1 LINK-C



EQC

Selected options



EVS-D



STOHS



HSL-Q



SBG



PKJ



RCST



HS 10RCS

Specifications

| | Unit | 2243-Z2 |
|--|-------|----------|
| | tm | 20,7 |
| | m | 9,1 |
| | kgm | 2750 |
| | ° | 400 |
| | mm | 2445 |
| | mm | 2500 |
| | mm | 860 |
| | mm | 5575 |
| | mm | 6455 |
| | Kg | 2300 |
| | Kg | 290 |
| | bar | 330 |
| | l/min | 70 - 100 |
| | kW | 34 - 48 |



1730L-RCS



Selected basics



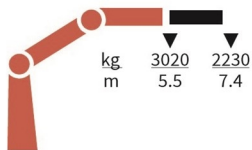
Selected options



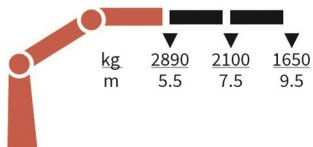
Specifications

| | Unit | 1730-L1 | 1730-L2 | 1730-L3 | 1730-L4 |
|--|-------|----------|----------|----------|----------|
| | tm | 16,5 | 15,9 | 15,4 | 14,9 |
| | m | 7,5 | 9,6 | 11,8 | 14 |
| | kgm | 1760 | 1760 | 1760 | 1760 |
| | ° | 450 | 450 | 450 | 450 |
| | mm | 2515 | 2515 | 2515 | 2515 |
| | mm | 2500 | 2500 | 2500 | 2500 |
| | mm | 775 | 775 | 775 | 775 |
| | mm | 4615 | 4615 | 4615 | 4615 |
| | mm | 6470 | 6470 | 6470 | 6470 |
| | Kg | 1435 | 1575 | 1710 | 1845 |
| | Kg | 200 | 200 | 200 | 200 |
| | bar | 345 | 345 | 345 | 345 |
| | l/min | 70 - 100 | 70 - 100 | 70 - 100 | 70 - 100 |
| | kW | 40 - 58 | 40 - 58 | 40 - 58 | 40 - 58 |

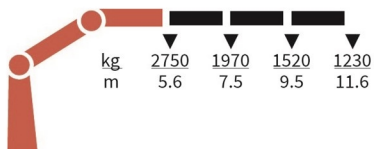
1730-L1-RCS



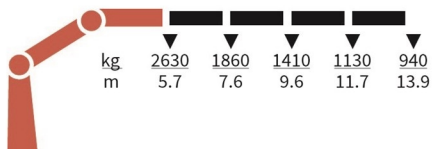
1730-L2-RCS



1730-L3-RCS



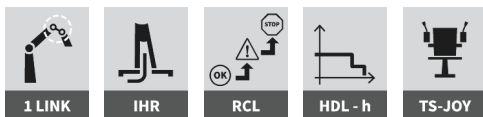
1730-L4-RCS



2110L-MC



Selected basics



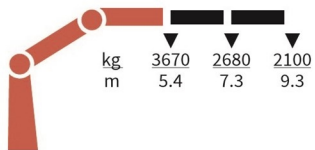
Selected options



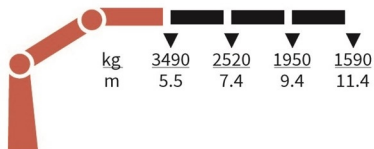
Specifications

| | Unit | 2110-L2 | 2110-L3 | 2110-L4 | 2110-L5 |
|--|-------|---------|---------|---------|---------|
| | tm | 20 | 19,2 | 18,7 | 18,2 |
| | m | 9,4 | 11,5 | 13,4 | 15,4 |
| | kgm | 2710 | 2710 | 2710 | 2710 |
| | ° | 450 | 450 | 450 | 450 |
| | mm | 2600 | 2600 | 2600 | 2600 |
| | mm | 2500 | 2500 | 2500 | 2500 |
| | mm | 815 | 815 | 815 | 815 |
| | mm | 5575 | 5575 | 5575 | 5575 |
| | mm | 6455 | 6455 | 6455 | 6455 |
| | Kg | 2015 | 2170 | 2325 | 2465 |
| | Kg | 290 | 290 | 290 | 290 |
| | bar | 300 | 300 | 300 | 300 |
| | l/min | 80 | 80 | 80 | 80 |
| | kW | 39 | 39 | 39 | 39 |

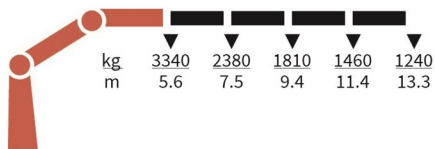
2110-L2-MC



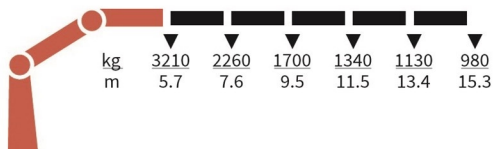
2110-L3-MC



2110-L4-MC



2110-L5-MC



2530L-RCS



Selected basics



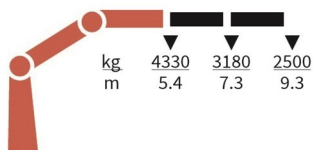
Selected options



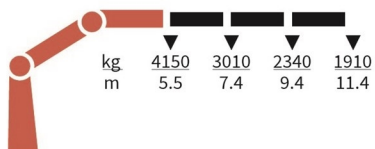
Specifications

| | Unit | 2530-L2 | 2530-L3 | 2530-L4 | 2530-L5 |
|--|-------|----------|----------|----------|----------|
| | tm | 23,6 | 22,9 | 22,3 | 21,8 |
| | m | 9,4 | 11,5 | 13,4 | 15,4 |
| | kgm | 2710 | 2710 | 2710 | 2710 |
| | ° | 450 | 450 | 450 | 450 |
| | mm | 2600 | 2600 | 2600 | 2600 |
| | mm | 2500 | 2500 | 2500 | 2500 |
| | mm | 815 | 815 | 815 | 815 |
| | mm | 5575 | 5575 | 5575 | 5575 |
| | mm | 6455 | 6455 | 6455 | 6455 |
| | Kg | 2015 | 2170 | 2325 | 2465 |
| | Kg | 290 | 290 | 290 | 290 |
| | bar | 345 | 345 | 345 | 345 |
| | l/min | 70 - 120 | 70 - 120 | 70 - 120 | 70 - 120 |
| | kW | 40 - 69 | 40 - 69 | 40 - 69 | 40 - 69 |

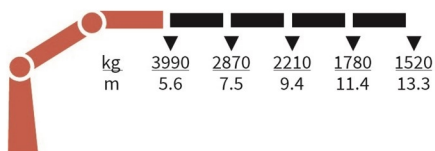
2530-L2-RCS



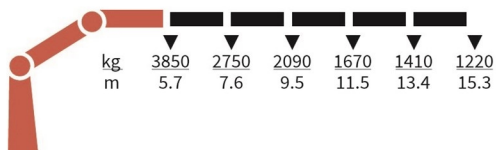
2530-L3-RCS



2530-L4-RCS



2530-L5-RCS



2310S-RCS



Selected basics



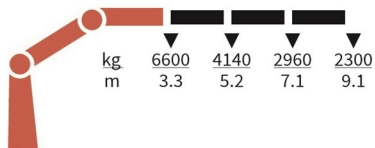
Selected options



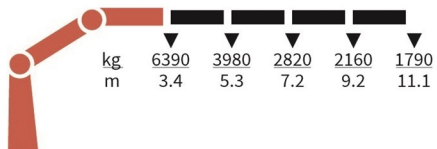
Specifications

| | Unit | 2310-S3 | 2310-S4 |
|--|-------|---------|---------|
| | tm | 21,7 | 21,4 |
| | m | 9,1 | 11 |
| | kgm | 2762 | 2762 |
| | ° | 400 | 400 |
| | mm | 2610 | 2610 |
| | mm | 2500 | 2500 |
| | mm | 815 | 815 |
| | mm | 5575 | 5575 |
| | mm | 6455 | 6455 |
| | Kg | 2065 | 2265 |
| | Kg | 290 | 290 |
| | bar | 345 | 345 |
| | l/min | 70 | 70 |
| | kW | 40 | 40 |

2310-S3-RCS



2310-S4-RCS



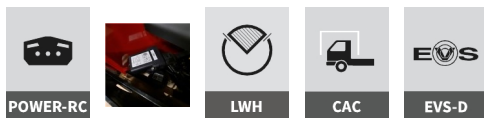
WB 41064-K-RCS



Selected basics

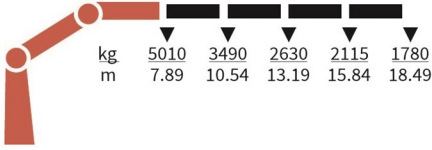


Selected options



Specifications

| | Unit | WB 41064-K4 |
|--|-------|-------------|
| | tm | 39,5 |
| | m | 19,02 |
| | kgm | 6730 |
| | ° | 470 |
| | mm | 2823 |
| | mm | |
| | mm | |
| | mm | 2302 |
| | mm | 7777 |
| | Kg | 5335 |
| | Kg | 51 |
| | bar | 365 |
| | l/min | 125 |
| | kW | |



SYMBOLER

SYMBOLS

SYMBOLES

SYMBOLE



tm

Lastmoment
Load moment
Lastmoment
Couple de levage



mm

Støttebensbredde, standard
Stabilizer spread, standard
Abstützweite, Standard
Entraxe maxi, stabilisateurs standard



m

Hydraulisk rækkevidde
Hydraulic reach
Hydr. Reichweite
Portée hydraulique



mm

Støttebensbredde, ekstra bred
Stabilizer spread, extra wide
Abstützweite, extra breit
Entraxe maxi, stabilisateurs extra large



kgm

Svingmoment
Slewing torque
Schwenkmoment
Couple de rotation



kg

Vægt ekskl. støtteben
Weight excl. stabilizers
Gewicht ohne Stützbeine
Poids sans stabilisateurs



°

Drejevinkel
Slewing angle
Schwenkbereich
Angle de rotation



kg

Vægt, standardstøtteben
Weight of stabilizers, standard
Gewicht, Standardstützbeine
Poids des stabilisateurs standard



mm

Højde over monteringsflade
Height above mounting surface
Höhe über Montagefläche
Hauteur sur surface de montage



bar

Arbejdstryk
Working pressure
Arbeitsdruck
Pression de travail



mm

Bredde, sammenfoldet standard
Width, folded, standard
Breite, Transportstellung
Largeur, grue repliée standard



l/min

Pumpeydelse
Pump performance
Pumpenleistung
Débit de pompe maxi



mm

Længde uden ekstraventiler
Length of crane, no extra valves
Einbaumaß ohne Zusatzventile
Longueur sans garnies



kW

Effekt
Power consumption
Kraftbedarf
Puissance nécessaire



Løftekapacitet med manuelle forlængerarme
Lifting capacity with manual extensions
Hubkraft mit manueller Verlängerung
Capacité de levage avec rallonges manuelles



Løftekapacitet uden manuelle forlængerarme
Lifting capacity, no manual extensions
Hubkraft, keine manuelle Verlängerung
Capacité de levage sans rallonges manuelles



Link arm system at jib
Ledarm ved knækarm
Kniehebel am Knickarm
Dispositif maxi-couple sur 2ème bras

1 LINK



Link arm system at column
Ledarm ved søjle
Kniehebel an der Säule
Dispositif maxi-couple sur la colonne

1 LINK-C



Dual link arm system
Dobbelt ledarmsystem
Doppelkniehebel
Système double maxi-couple

2 LINK



Stabilizer operation from top seat
Støttebensbetjening fra topsæde
Stützbeinbedienung vom Hochsitz aus
Commande des béquilles depuis le siège

2STOTS



Operation of 6 functions from the ground
Betjening af 6 funktioner fra jord
Bedienung von 6 Funktionen vom Boden
Commande de 6 fonctions depuis le sol

6CTRL



AutoSwitch

ASW



Transport alarm
Transportalarm
Transportwarnung
Avertisseur de transport

BEHEW



Cabin anti-crash
Beskyttelse af førerhuset
Schutz des Fahrerhauses
Protection de la cabine

CAC



Double slewing gear
Dobbelt svinggear
Doppeltes Schwenktriebe
Double engrenage planétaire

DSG



Engine control from the top seat
Motorstyring fra topsæde
Motorsteuerung vom Hochsitz aus
Commande du moteur du siège sur colonne

ECTRLTS



Environmentally friendly quality coating
Miljøvenlig kvalitetsbelægning
Umweltfreundliche Oberflächenbehandlung
Revêtement de qualité écologique

EQC



Electronic vehicle stability
Stabilitetssikringssystem
Standicherheitssystem
Système de contrôle de la stabilité

EVS



Extra valves in hose reels, internally led
Ekstraventiler i slangeruller, ført indvendigt
Zusatzventile in Schlauchrollen, innenliegend
Distr. compl. à enrouleurs, internes

EXV-R-IN



Extra valves in hose reels, externally led
Ekstraventiler i slangeruller, ført udvendigt
Zusatzventile in Schlauchrollen, außenliegend
Distr. compl. à enrouleurs, externes

EXV-R-OUT



Full hoist preparation
Komplet spilforberedelse
Komplette Seilwindvorbereitung
Préparation complète au treuil

FHP



Fly-jib

FJ



Manual swing-up stabilizers with gas spring
Manuelt opsvingelige støtteben med gasfjeder
Manuell schwenkbare Stützbeine mit Gasfeder
Béquilles manuelles rotatives avec vérin à gaz

GR-STAB



Electronic speed adaptation
Elektronisk hastighedstilpasning
Elektronischer Temporegler
Adaptation de vitesse électronique

HDL-d



Electro-hydraulic speed adaptation
Elektro-hydraulisk hastighedstilpasning
Elektro-hydraulischer Temporegler
Adaptation de vitesse électro-hydraulique

HDL-h



Heated seat
Sædevarme
Sitzheizung
Siège chauffant

HEAT



Hydraulic hoist
Hydraulisk spil
Hydraulische Seilwinde
Treuril hydraulique

HOIST



Stand-up controls, direct control
Hævet styring, direkte
Hochstand, direkte Bedienung
Poste homme debout, commande directe

HS 10



High stand flexible
Flexibel hævet styring
Flexibler Hochstand
Poste homme debout flexible

HS-F



High stand safety system - quadrant
Sikkerhedssystem til hævet styring - quadrant
Sicherheitssystem für Hochstand - Quadrant
Sécurité poste homme debout - Quadrant

HSL-Q



Stand-up controls with radio remote control
 Hævet styring m. radiofjernstyring
 Hochstand mit Funkfernsteuerung
 Poste homme debout avec radio-commande

HS-RC



Internal hose routing
 Indvendig slangeføring
 Innenliegende Schlauchführungen
 Cheminement interne des flexibles

IHR



Insert for increased lifting height
 Indstik til øget løftehøjde
 Einsatz für erhöhte Hubhöhe
 Rallonge pour hauteur sous crochet accrue

IILH



Intelligent parking assist system
 Intelligent parkeringssystem
 Intelligentes parksystem
 Système de stockage intelligent

IPA



Light over control positions
 Lys over betjeningssteder
 Lampe über Bedienstellen
 Éclairage des postes de commande

LCTRL



Limitation of working area, horizontal
 Begrænsning af arbejdsområdet, horisontalt
 Begrenzung des Arbeitsbereichs, horizontal
 Limitation zone de travail, horizontale

LWH



Personnel basket on crane
 Mandskabskurv på kran
 Hubarbeitskorb am Kran
 Nacelle élévatrice sur grue

MEWP



Personnel basket on fly-jib
 Mandskabskurv på fly-jib
 Hubarbeitskorb am Fly-Jib
 Nacelle élévatrice sur fly-jib

MEWP-FJ



Progressive crane control
 Progressiv kranstyring
 Progressive Kransteuerung
 Commande de la grue progressive

PCC



Priority flow control
 Prioriteret flowkontrol
 Priorisierte Flowkontrolle
 Régulation de débit prioritaire

PFC



Protection kit for jib
 Beskyttelseskit for kranarm
 Schutzsatz für Knickarm
 Kit de protection pour 2ème bras

PKJ



Radio remote control with colour display
 Radiofjernstyring med farvedisplay
 Funksender mit Farbdisplay
 Radio-commande avec écran couleur

POWER-RC



Lastindikering
 Load indication
 Lastanzeige
 Indicateur de charge

RCI



Lastmomentbegrænsning
 Load moment limitation
 Lastmomentbegrenzung
 Limitation du couple de levage

RCL



Remote control of stabilizers on crane
 Radiofjernstyring af støtteben på kranen
 Funkfernsteuerung der Stützbeine des Krans
 Radio-commande des béquilles sur la grue

RCST



Hydraulic stabilizer beams 4.2 m - 5.1 m
 Hydrauliske støttebensbomme 4,2 m - 5,1 m
 Hydraulische Auszugskasten 4,2 m - 5,1 m
 Coulisseaux hydrauliques 4,2 m - 5,1 m

SB 42-51



Slew braking control
 Bremskontrol af svingbevægelse
 Schwenkstabilitätssystem
 Contrôle de freinage de la rotation

SBC



Stowing bracket for grab
 Parkeringsbeslag for grab
 Parkbeschlag für Zweischalengreifer
 Support de repliement de benne preneuse

SBG



Signal wire for hydraulic hook grab
 Singalledning til hydraulisk krog
 Signalleitung zum hydraulischen Lasthaken
 Fil de signal pour crochet hydraulique

SHG



Stowing lock, boom system
 Parkeringssikring af armsystem
 Sicherung des abgelegten Armsystems
 Verrou de stockage, système de flèches

SLB



Stabilizer operation from high stand
 Støttebensbetjening fra hævet styring
 Stützbeinbedienung vom Hochstand aus
 Cde des béquilles du poste homme debout

STOHS



Topsæde, joystick
 Top seat, joysticks
 Hochsitz, Kreuzsteuerhebel
 Siège sur colonne, joysticks

TS-JOY



Crane width: 1.7 or 2.0 m
 Kranbredde: 1,7 eller 2,0 m
 Kranbreite: 1,7 oder 2,0 m
 Largeur de grue: 1,7 ou 2,0 m

WIDTH



See all our abbreviations
 Se alle vores forkortelser
 Siehe alle unsere Abkürzungen
 Voir toutes nos abréviations



POWER TO LIFT

SINCE 1945



Find your nearest HMF partner here:
[hmfcranes.com](https://www.hmfcranes.com)